

2011 – 2015 COMMUNITY FORESTRY MANAGEMENT PLAN



Dumont
Shade Tree
Commission

Borough of Dumont
Bergen County
New Jersey



Mayor & Council

Matthew P. McHale, Mayor
Carl Manna, Council President
& 2007 DSTC Liaison
Matthew M. Carrick, Councilman
2010 & 2011 DSTC Liaison
Marty Caspare, Councilman
Kenneth Freeman, Councilman
Harry Stylianou, Councilman
& 2008 DSTC Liaison
Ellen Zamechansky, Councilwoman

Borough Administrator

John Perkins

Department of Public Works

Bill Ebenhack, Superintendent

Dumont Shade Tree Commission

Sally Tayeb, Commission President
Tom Fisichella, Vice President Tree Maintenance
Rafael Riquelme, Commissioner, Arboretum, 2009 Council Liaison
Raymond Slaman, Vice President Adopt-A-Tree
Larry Tobias, Commissioner & I-Tree
Sara Reiss, Commission Alternate, Seniors Liaison
Abbie Slaman, Commission Alternate & Webmaster

Plan Prepared by
Farr Forestry Services
6 Ricker Road
Newfoundland, NJ 07435
farrforest@yahoo.com
973-208-8165



UPDATE 8-1-11

Caring for Trees Today and Planting Trees for Tomorrow

Table of Contents

MUNICIPALITY INFORMATION FORM	4
1. INTRODUCTION.....	5
A. Scope	5
B. Mission Statement:.....	5
C. Program Goals:	5
2. Liability Statement	7
3. Community Overview – Five Years of Progress	8
A. Links to the Existing Master Plan.....	11
B. Approved and Planned Shade Tree Ordinances.....	11
4. Community Forestry Program Administration	12
A. Roles of Elected Officials, Borough Employees and Volunteers.....	12
B. Dumont Shade Tree Commission – Members and Terms.....	13
C. Tree Service Request Procedures.....	14
D. Budget Statement.....	15
5. Community Maps.....	16
A. Street Map.....	16
B. Dumont Shade Tree Arboretum Survey and Notes.....	17
6. Community Stewardship Incentive Program	18
CSIP 1 Training Plan.....	18
CSIP 2 Shade Tree Ordinance Establishment	19
CSIP 3 Public Education and Outreach.....	20
CSIP 4 Arbor Day Activities.....	23
CSIP 5 Tree Inventory and Assessment.....	23
CSIP 6 Hazard Tree Assessment	23
CSIP 7 Storm Damage Assessment.....	24
CSIP 8 Tree Maintenance and Removal	24
CSIP 9 Insect and Disease Management	25
CSIP 10 Wildfire Protection.....	25
CSIP 11 Tree Planting	25
CSIP 12 Tree Recycling	26
CSIP 13 Sidewalk Maintenance	26
CSIP 14 Storm Water Management	27
CSIP 15 Other	28

7. Plan Implementation	29
2011 Objectives.....	29
2012 Objectives.....	30
2013 Objectives.....	31
2014 Objectives.....	32
2015 Objectives.....	32
8. Community Stewardship Incentive Program (CSIP) Funding.....	34
APPENDIX A – 2007 Ordinance - Dumont Shade Tree Commission.....	37
APPENDIX B – 2008 Dumont Shade Tree Ordinance.....	41

MUNICIPALITY INFORMATION FORM

Municipality Borough of Dumont
County Bergen County
Address 50 Washington Avenue
 Dumont, NJ 07628

Contact Name Sally Tayeb, Dumont Shade Tree Commission President
and Title John Perkins, Borough Administrator

Phone Number 201-244-3920
Fax # and E-mail 201-387-5065 dumontstc@yahoo.com jperkins@dumontboro.org

Organization Name Dumont Shade Tree Commission

Mayor's Signature _____
 I certify that this Community Forestry Management Plan was developed
 specifically and exclusively for our municipality.

Date of Management June 2011
Plan Submission

Time Period Covered 2011-2015
In Management Plan
Community Stewardship X CSIP# 1 Training
Incentive Program (CSIP) X CSIP# 2 Community Forestry Ordinance Establishment
Identified in Management X CSIP# 3 Public Education and Awareness
Plan X CSIP# 4 Arbor Day Activities
 X CSIP# 5 Tree Inventory
 X CSIP# 6 Hazard Tree Assessment
 X CSIP# 7 Storm Damage Assessment
 X CSIP# 8 Tree Maintenance and Removals
 X CSIP# 9 Insect and Disease Management
 X CSIP# 10 Wildfire Protection
 X CSIP# 11 Tree Planting
 X CSIP# 12 Tree Recycling
 X CSIP# 13 Sidewalk Maintenance Program
 X CSIP# 14 Storm Water Management
 X CSIP# 15 Other

*Official Use Only
Certification*

The above named municipality/county has made formal application to the New Jersey Forest Service. I am pleased to advise you that after our review, the NJ Forest Service has concluded that this plan meets the standards set forth by the State and the NJ Community Forestry Council and is approved for the period covered.	
Signed: _____	____/____/____
State Forester	Approval Date

1. INTRODUCTION

A. Scope

The Borough of Dumont applied for and received a Green Communities Grant to finance the development of this second five year plan. The Borough of Dumont Community Forestry Plan is being developed by the Dumont Shade Tree Commission and is designed to build upon the successes over the five years since the first plan was developed. The Shade Tree Commission has been extremely active and has met or exceeded many of the goals laid out in the first Community Forestry Plan.

The community forest resource is an important resource that contributes to the quality of life for the residents of the Borough of Dumont. This community forest resource works to improve air and water quality, reduce energy costs, increase property values, increase economic stability, improve citizen health and beautify the borough. The current forest resources were planted by previous residents and must be maintained and improved by current residents for the future.

B. Mission Statement:

“The Dumont Shade Tree Commission is committed to promote a sustainable and productive community forest and shade tree resource that will subsequently improve the quality of life for the residents of the Borough of Dumont.”

C. Program Goals:

The New Jersey Community Forestry Council has identified twelve Community Stewardship Incentive Program (CSIP) practices that together compromise a complete and comprehensive community forestry program that continues to build on the successes of the last five years.

Within each of the plan elements that follow, existing Borough programs, policies and procedures are described, intermediate end element-specific goals are established, and five-year CSIP-based objectives are set.

Specific goals laid out by the Shade Tree Commission are listed below:

1. To continue promote general tree awareness and stewardship among residents of the Municipality.

2. To improve the Community Forest Resource in the Borough of Dumont.
3. To improve the health and safety of the community forest.
4. To maintain Tree City USA status throughout the planning period.
5. To create a non-profit group early in the planning period.
6. Improve and maintain public interest, appreciation and support for public shade tree programs and encourage volunteer participation.
7. Encourage the planting and proper care of trees on private property.
8. Meet all eligibility requirements of the NJ Shade Tree & Community Forestry Assistance Act.

2. Liability Statement

Although street trees are an asset to the Borough of Dumont, it is inevitable that they mature and require care, maintenance and eventual replacement. If the forest resource is recognized as green infrastructure, this cycle of preventative maintenance and care and replacement will be more clearly understood. Care and maintenance as well as planting the right tree in the right place cannot be underestimated at reducing future conflicts and potential hazards to public safety and optimizing the positive environmental and economic benefits provided to the community by the community forest.

The Borough of Dumont must work within a reasonable budget that may not be able to meet each and every need of the community immediately. Therefore the intent of this plan is to focus available resources on the greatest need and prioritize steps to be taken towards a healthy forest commensurate with reducing risks to public safety.

We feel, by taking logical steps outlined in the Community Forestry Plan, we will garner public support for plan implementation and demonstrate the long term benefits to the environment and public safety.

We also want to become more pro-active in the management and care of trees. Through thorough inventory and hazard assessment, we will position our Dumont Shade Tree Commission to take corrective action, where possible, and within the borough's budgetary constraints, prior to structural tree failure and other hazardous tree related conditions. It is acknowledged that not all hazardous conditions will be predicted. It is much like predicting when the next drought will occur. Good planning, maintenance and care will reduce the probability of negative effects but unexpected events may still occur.

Following this Community Management Plan will demonstrate that the Borough of Dumont is devoting reasonable levels of resources in a planned manner to reduce the number and severity of tree related accidents and thereby reduce its exposure to liabilities and increase public safety.

3. Community Overview – Five Years of Progress

SUMMARY 2006 – 2010:

Dixon Homestead Library in 1944...



Site of the 2006 & 2007 Arbor Day Celebrations Home for the Dumont Shade Tree Commission Monthly Meetings, and the

Annual Arbor Day Art, Poetry and Photography Contest from 2006 to the present.



2006 Arbor Day – A Red Oak Tree was planted by the “Ad Hoc Committee for the Formation of the Dumont Shade Tree Commission.” Notables present included Mayor

Matthew McHale, who Proclaimed Arbor Day, Dumont High School Principal Maria Poidomanes who read poetry, Library Director Carolyn Blowers who supports the DSTC efforts through the Library facility, Vocalist Domenick Panfile, and various volunteers.

2007 – The Dumont Shade Tree Commission was established by ordinance and the first 7 member commission appointed by Mayor McHale.

2008 – The Dumont Shade Tree Ordinance governing trees on Public Lands was adopted by the Borough Council. The Ordinance includes the Adopt-A-Tree program, Tree Planting Guidelines, and maintenance provisions.

2009 – The Dumont Shade Tree Arboretum was established with the assistance of NJ CSIP Funding.

2010 – Dumont Community Forestry Programs maturing as an integral part of Dumont life. Adopt-A-Tree Plantings surpass the 100 tree mark. The dreaded tree removal and pruning backlog is caught up, including the devastating storm of March 2010.

PROGRESS DETAILS 2006 – 2010:

In 2006, the Dumont Shade Tree Commission was successful in getting three volunteers, one councilman and the Borough Administrator CORE trained. Eighteen volunteers were active in the community’s Arbor Day celebration. The Arbor Day celebration included involvement of over 90 participants and included the inaugural Art, Poetry and Photography Contest. Education and outreach included an insert in the PTA/PTO newsletter for Arbor Day, several articles printed in the Twin Borough, a free community newspaper. Displays were set up at Dumont Day as well as informational literature through the Dumont Library.

In 2007, two more volunteers attended CORE Training. Education and Outreach efforts included the annual Arbor Day celebration including the Art, Poetry and Photography Contest. A Memorial Day float dedicated to the Shade Tree Commission was used to distribute stickers, seed packs and Shade Tree Commission cards. Articles were submitted to the two local newspapers and educational literature was distributed through the Dumont Library, schools and also at Dumont Day.

The most important progress was the designation of the Shade Tree Commission through a Borough Ordinance and the Commission was fully appointed. There were 281 tree issues were documented including 58 trees removed in 2007. Trees were planted in various parks.

In 2008, the Borough initiated a hazard tree inventory and through CSIP funding, hired a consulting CTE to assist with the numerous tree complaints and calls that were received. A municipal Shade Tree Ordinance was approved in March, 2008 to regulate shade tree resources on public land and establish responsibility. A Shade Tree Commission website was developed. Arbor Day Celebration and other outreach efforts were continued. An area was designated for the development of an Arboretum and 2009 CSIP funding was applied for and an adopt



in
ind
afael

tree program was developed. The total CSIP grant was \$25,000. A Tree Desk was also set up at Borough Hall with a phone and a standard reporting form for tree complaints and issues.

In 2009, ground was broken on the Dumont Shade Tree Arboretum with eleven trees planted there. The Borough tree expenditures include \$47,000 in tree trimming and removal, \$2,000 on Arbor Day and Public Education and Outreach as well as \$9,000 on tree planting projects. The DPW was busy with 97 tree removals and the trimming of 456 trees in 2009. There were 24 Adopt-a-Tree plantings. A second tree ordinance dealing with tree issues on private land was under

discussion. Work continued on the Hazard Tree Survey and the Shade Tree Commission applied for Tree City USA recognition which was announced on Arbor Day 2010. Dumont was awarded a \$7,000 Business Stimulus Grant which was used to purchase a 25 foot flag pole to demonstrate the height of a mature small tree. It was also utilized for soil testing and augmentation at the Arboretum and educational signage to be placed at the Arboretum.

The Dumont Shade Tree Program has developed extensive support throughout the community from the public and elected officials, developed a large and dedicated group of volunteers and has been successful in securing funding to incorporate goals laid out in the first plan. These goals were all completed in a timely manner based upon available funding and the resources available to the Borough. Dumont is an exemplary program for progress made during the first five year planning period.

Approximately twelve years ago (1999), a group of citizens volunteered to establish a Shade Tree Commission. This effort at the time was unsuccessful. The main reason given was the difficulty of dealing with

complaints. The Commission created under the first five year plan has been able to deal with the high number of complaints and issues through grant funding received from the Community Forestry Program, the new head of the DPW and a new tree expert and a pro-active borough council and mayor, an extremely dedicated group of volunteers and a community spirit of cooperation from most residents which is a reflection of the hard work of the relatively young Shade Tree Commission. This group is proactive and forward thinking and will continue to succeed and expand its knowledge and accomplishments.

Problems encountered by the Shade Tree Commission were similar to those encountered by other Commissions statewide including funding issues, burdens on volunteer time for inspections and completing hazard tree inventories, completing and meeting the annual training requirements and CORE requirements. This Commission has been very creative in finding alternatives to meet these objectives and moving forward as well as looking ahead toward new projects to continue in building on the strong foundation creating during the first three years of the Shade Tree Commission.



09. Left
b, Tara



Tara Barker

The Dumont Community Forest is a much healthier, safer and becoming younger with the new planting program which continues to be expanded. Over 165 potentially hazardous trees were removed which drastically reduces the risk to health and safety of the residents of Dumont. Over 456 trees were pruned by the DPW removing hazardous branches which improves the health and safety of the Community Forest as a whole. PSEG had come through the Borough in 2011 and cleared their power lines. The next pruning cycle for PSEG is 2011.

A. Links to the Existing Master Plan

The Community Forestry Plan will be adopted as a portion of the Dumont Master plan which is currently being revised. The following sections are areas where the Community Forestry program can address topics raised there. Early in the planning period discussions should be coordinated with the Planning/Zoning Board to address the Community Forest in the Master Plan.

B. Approved and Planned Shade Tree Ordinances

February 20, 2007 – Ordinance 07-1322 titled “An Ordinance Establishing the Borough of Dumont Shade Tree Commission.” The Ordinance was offered by Councilman Harry Stylianou and seconded by Eric Abrahamson and passed with unanimous vote present. This first Ordinance established the Commission of five (5) members and two (2) alternates “for the regulation, planting, care, and control of shade and ornamental trees and shrubbery upon and in the streets, highways, public spaces, parks, parkways of the Borough of Dumont.” See Appendix A.

March 4, 2008 – Ordinance 1358 titled “Dumont Shade Tree Rules and Regulations Ordinance.” The Ordinance was offered by Councilman Robert McQuade and seconded by Councilman Carl Manna and passed with unanimous vote present. The Ordinance is regarding “Public Lands and Public Safety Interests to promote and regulate the preservation of Borough Trees, incorporate Community Forestry Management Plan, outline Tree removal procedures and requirements, and implement standards and procedures for compliance, and penalties for violations of the ordinance.” The Ordinance outlines the then twelve (12) CSIP Practices, which are expanded in this second Management Plan to be fifteen (15) CSIP.

A more comprehensive ordinance concerning trees on private property is being developed at this time and may be addressed as a zoning ordinance.

4. Community Forestry Program Administration

In order to implement this plan a fully appointed and functioning Shade Tree Commission will be maintained. The Dumont Shade Tree Commission shall be responsible for the oversight of the management of the community forest resource for the Borough and coordinating the recommendations laid out in this plan. There are numerous borough employees and volunteers who will carry out the actions laid out in this plan including CORE Trained individuals on the Commission, Borough Council and within the Department of Public Works.

The Shade Tree Commission will jointly administer Arbor Day activities within the Borough, recommendations for potential planting sites, work closely with the Consulting Forester and Department of Public Works concerning hazard tree identification and prioritizing removals and pruning activities.

A. Roles of Elected Officials, Borough Employees and Volunteers

1. **Dumont Shade Tree Commission** will be responsible for:
 - Coordination and implementation of the Community Forestry Plan
 - Continue to recruitment of active and dedicated volunteers
 - Create and disseminate educational materials
 - Interaction with Municipal Officials, Residents and Consulting Forester
 - Research funding mechanisms and create a non-profit
2. **Mayor and Council** will:
 - Review and approve proposed budgets and ordinances.
 - Review and approve proposed projects and grants regarding the Community Forestry.
3. **Borough Administrator's Office** will be responsible for:
 - Assigning a secretary to be the Tree Coordinator.
 - The Tree Coordinator will receive complaints, issue acknowledgement letters, issue notices to the Department of Public Works and Dumont Shade Tree Committee and update the database with action completed.
 - Follow-up on resolution of issues where normal protocols are not adequate.
4. **Department of Public Works** will be responsible for:
 - Tree maintenance (pruning, tree removals and insect control).
 - Annual leaf and branch clean-up
 - Tree planting cooperatively with the Shade Tree Committee

- Emergency tree removal and pruning in coordination with PSEG and Bergen County.
5. **Board of Education** will be responsible for:
- Care of trees on school grounds
 - Participation in Annual Arbor Day Contest Participation
 - Cooperate with educational efforts with the Shade Tree Committee.
6. **Residents and Businesses** will be responsible for:
- Grassroots identification of tree problems, insect and disease outbreaks, potential hazard tree.
 - Participation in Arbor Day and Dumont Day contests and activities.
 - Volunteers for Adopt a Tree Programs
 - Support the non-profit, arboretum and Adopt-A-Tree Program

B. Dumont Shade Tree Commission – Members and Terms

Current members of the Shade Tree Commission are listed below with their term dates. The original 2007 Ordinance had appointments in the spring, and then later Dumont resolved to have all commissioners with terms ending 12/31 of the calendar year. This Roster is the transitional plan for adapting the current appointments, so that by 4014 the transition is complete.

Shade Tree Commission Appointments Roster & Future Game Plan (Updated: 5/20/2011)

<u>Date</u>	<u>Name</u>	<u>Term</u>	<u>Term Ends (Ended)</u>
4/10/07	Sally Tayeb	5 years	to 4/30/12
1/6/09	Abbie Slaman (Alt)	4 years	to 4/30/12 (Alternate)
1/12/09	Tom Fisichella	5 years	to 12/31/13
1/22/09	Raymond Slaman	5 years	to 4/30/14
2/23/11	Sara Reiss (Alt)	5 years	to 12/31/15 (Alternate)
2/18/11	Rafael Riquelme	5 years	to 12/31/15
5/1/2011	Lawrence Tobias	5 years	to 12/31/16

Future Mayoral Appointment Schedule:

TBD 2012	ST 2012 Expiration	5 years	to 12/31/2017
TBD 2012	AS 2012 Expiration	5 years	to 12/31/2017 (Alternate)
TBD 2013	TF 2013 Expiration	5 years	to 12/31/2018
TBD 2014	RS 2014 Expiration	5 years	to 12/31/2019
TBD 2015	RR 2015 Expiration	5 years	to 12/31/2020
TBD 2015	SR 2015 Expiration	5 years	to 12/31/2020 (Alternate)
TBD 2016	LT 2016 Expiration	5 years	to 12/31/2021

Former Terms of Commissioners and Alternates:

Tara Barker 2007-2011	
Mike Dobias	2007-2009
Joan Lafferty	2007-2011

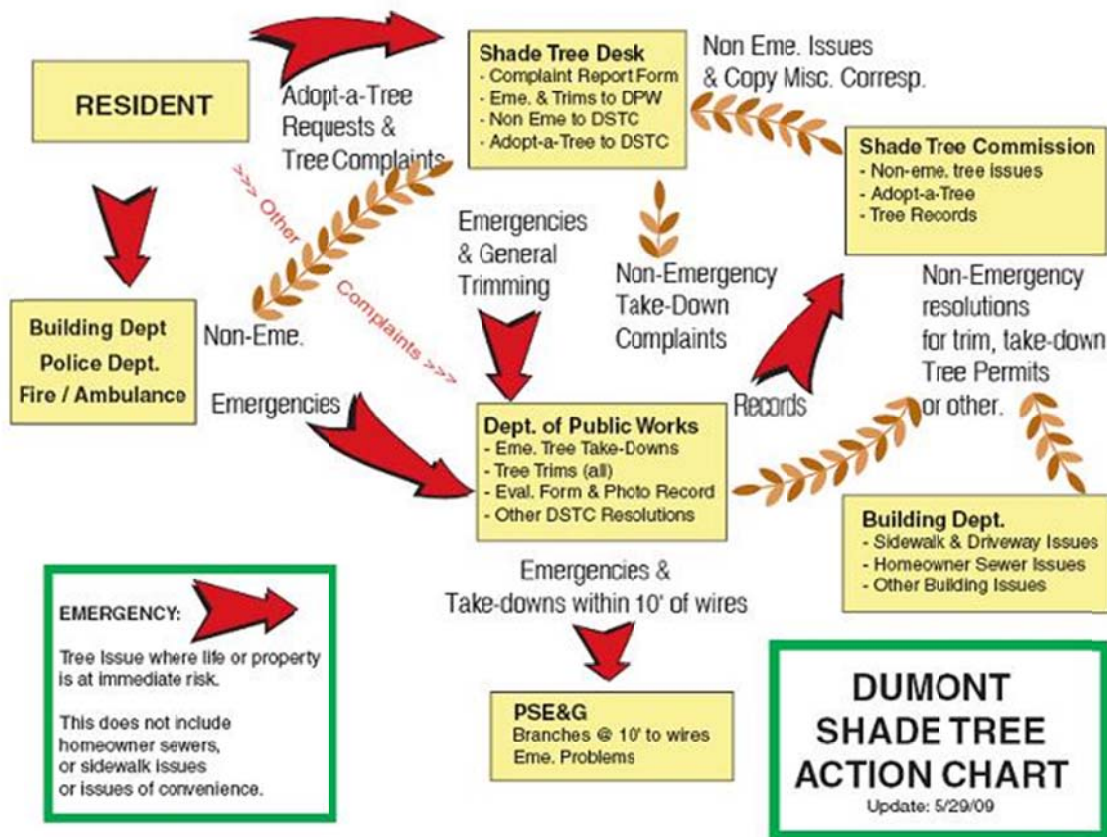
Carol Maxfield 2007-2009
 Sara Reiss 2007-2010
 Abbie Slaman 2007-2009

Notes:

1. Titles such as President, Vice President, Secretary, Treasurer, Webmaster, i-Tree, or other titles are at the discretion of the Commissioners.
2. Future appointments of Commissioners to be 4 or 5 years, or the completion of an unfinished term to ensure staggered terms.
3. Future appointments of Alternate Commissioners to be 5 years as per the ordinance.
4. Future appointments to end on 12/31 to conform to Borough of Dumont procedures established in 2010.

C. Tree Service Request Procedures

The flow chart below provides a graphic representation of how maintenance or removal requests will be handled by the Borough of Dumont.



Most tree inquiries are received via the Shade Tree Desk. Non-emergency issues are handled by the Shade Tree Commission. Emergencies and general pruning are handled by the DPW. Emergency situations called into

the Police Department are forwarded directly to the DPW. If the problem is not an emergency it is then forwarded to the Shade Tree Commission and handled as discussed above. Any removals or emergencies within 10 feet of wires are handled by PSE&G. At this time there are no tree related projects handled by private contractors with the exception of tree removals on private property and tree issues that are not within the Borough right-of-way.

Many of the bumps in the road as far as handling complaints were ironed out during the implementation of the first five year plan. Future issues will be handled much in the same manner as past issues. The Dumont Shade Tree Commission works hard to maintain an excellent relationship with the Dumont Department of Public Works.

D. Budget Statement

The Borough of Dumont has been recognized as a Tree City in 2009. The Borough has a dedicated group of volunteers, a Shade Tree Ordinance and spends at least \$2 per capita on tree related expenses. The Borough of Dumont will continue to be recognized annually as a Tree City. The serves a reaffirmation of the good work completed by elected officials, the Shade Tree Commission, the Department of Public Works and other volunteers. Over the last five years the Borough has dedicated at least \$65,000 annually to its tree resource for its 17,500 residents.

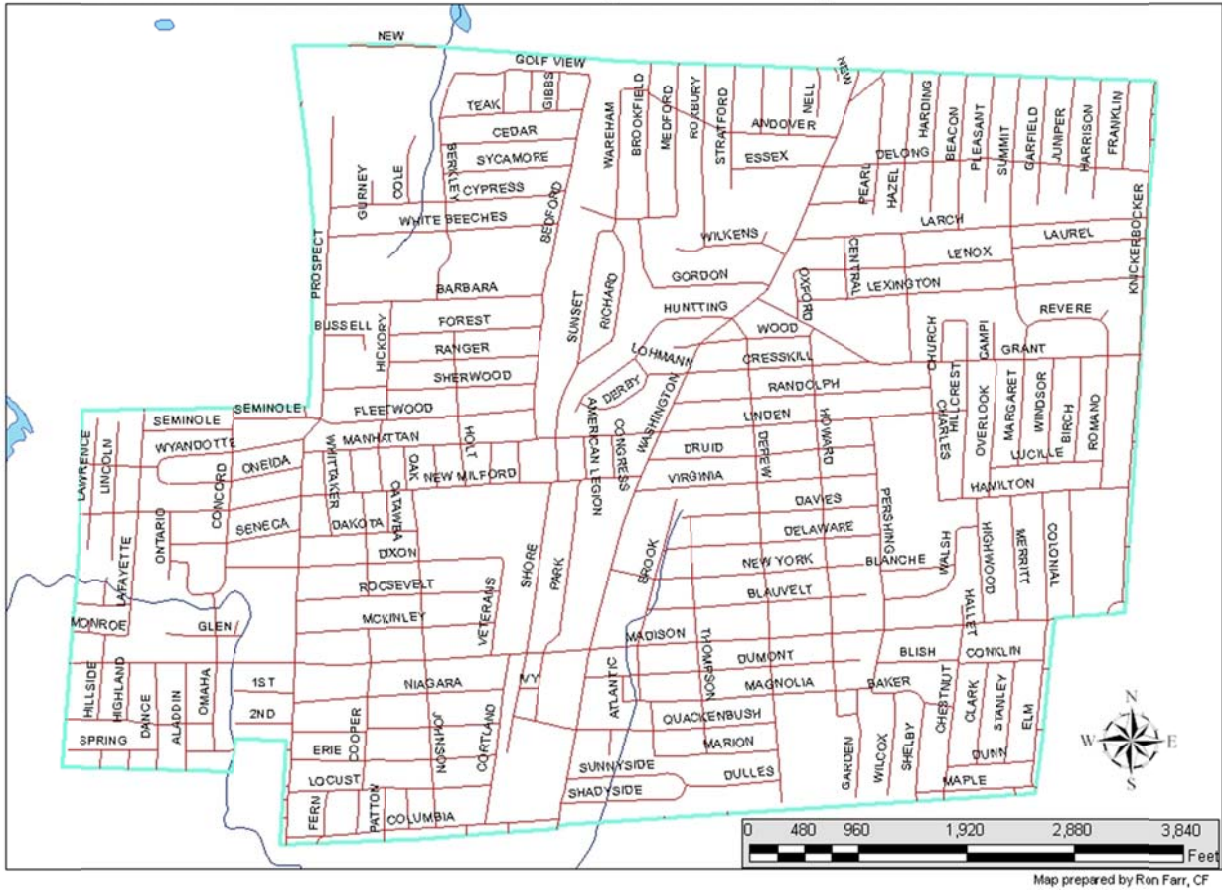
Future Budgetary Allocation

The Borough will continue to fund tree removal, pruning and planting projects over time. It should be noted that the Shade Tree Commission has received \$40,000 in grants over the 5 years that the plan has been approved. The Shade Tree Commission has also received donations for tree planting projects and will work to create a non-profit group to help fund future projects.

5. Community Maps

A. Street Map

Dumont Borough Street Map



B. Dumont Shade Tree Arboretum Survey and Notes

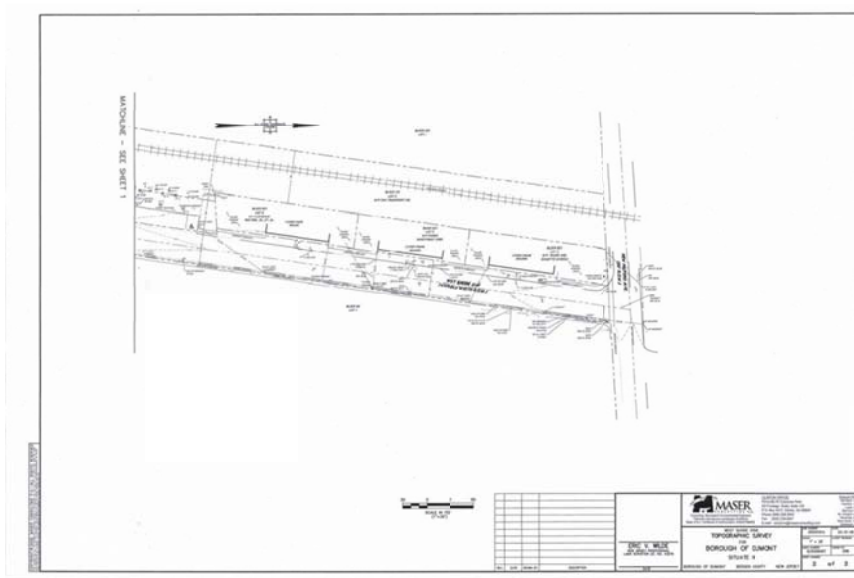
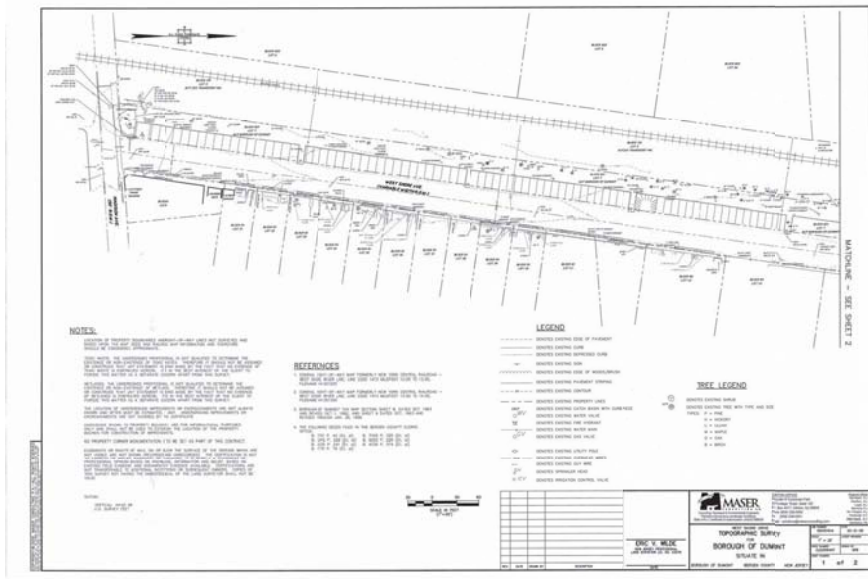
With the assistance of the NJ Forestry Service, through the 2009 CSIP Grant, and many volunteer hours, the Dumont Shade Tree Arboretum was established on Arbor Day 2009.

The Arboretum extends in the public right of way from Madison Avenue to New Milford Avenue along West Shore Avenue. It includes both sides of the roadway.

The Arboretum seeks to be a "Show-And-Tell" demonstration of the various Shade Trees offered to the residents and businesses in the Dumont Adopt-A-Tree Program. As of 2011, the Commission has planted

17 tree Species. In addition, the Arboretum incorporates previous plantings by Jackie D'Angelo, and by the volunteer Shade Tree Committee which was active in the late 1990s.

Future projects will be to demonstrate street tree planting concepts, including under wires, in commercial sidewalks, etc.



A Not-For-Profit organization is under discussion for the purpose of oversight of the Arboretum, including examination of making a special zoning district, fund-raising, development of the sight, and education with regard to Shade Trees and the Suburban Environment.

6. Community Stewardship Incentive Program

CSIP 1 Training Plan

The purpose of the training plan is to ensure that the various people who play a role in implementing this Community Forestry Plan. CORE training is required by the New Jersey Shade and Community Forestry Assistance Act, P.L. 1966, Chapter 135.

In order to maintain the approved plan status the Borough of Dumont must accrue a minimum of 8 Continuing Education Unit's (CEU's) annually. These 8 CEU's must be completed by at least two individuals (one volunteer and one Borough employee) representing the municipality. Many seminars, courses and conferences which offer CEU's will be provide for Community Forestry Credits. If there is a course you feel representatives should receive CEU's for you must submit the course description, list of speakers and list of attendees (including your name) for proof of attendance to:

Todd Wyckoff
Training Coordinator
Community Forestry Program
Mail Code 501-04
Division of Parks and Forestry
Community Forestry Program
501 East State Street
PO Box 420
Trenton, NJ 08625
(609) 292-2532

Current CORE Training

At this writing, ten volunteers, employees and elected officials have received CORE Training. The Borough will continue to encourage new volunteers, employees and elected officials to attend CORE Training as this is a good foundation upon which to build a successful community forestry program and retain institutional knowledge of the municipal program and the benefits of a healthy community forest.

Current Continuing Education Units

The requirements according to the Act require that at least 2 people acquire a total of 8 CEU's annually.

The goal of this Community Forestry Plan is to recommend training such that representatives from each of four groups (DPW, Shade Tree Commission, Mayor and Council and Borough Administrator/Tree Coordinator)

should receive CORE Training and be eligible to attend Community Forest related continuing education as funding permits. This will ensure that focus will remain on the Community Forestry Program within minimal effect of rollover of Commission members, elections and personnel changes.

The extent of training during the first five year planning period was extraordinary for a small municipality with numerous volunteers being trained. Training will be pursued in order to maintain certification and result in a more educated commission, populace and ultimately a more effective shade tree program for the borough. The current training needs for the Borough of Dumont, should include the managing a non-profit entity, grant writing, creation and maintenance of a nursery, and storm water management.

Other training topics particularly for new members include but are not limited to: tree inventory skills, proper tree planting methods, proper pruning techniques, urban soils, disaster planning, municipal tree budgeting, tree pruning, root barriers, wood recycling, leaf composting, public relations, tree identification, tree biology, tree/sidewalk/utility conflict, tree disease and insects, and control methods.

Sources for gaining continuing education include the New Jersey Forest Service, New Jersey Shade Tree Federation, the National Arborist Association, International Society of Arboriculture, Consulting Foresters and Courses offered by Rutgers Cooperative Extension, Bergen Community College or other entities. With the extensive development of web based courses many of these courses may be accessible without extensive travel or cost. Penn State University, Cornell University and the University of Minnesota all offer forestry related web courses as well as the U.S. Forest Service.

Goal: To continue to provide annual training to meet the requirements of the Community Forestry Act.

Objectives:

- i. Continue to provide training to volunteers and municipal employees to meet the annual training requirement.
- ii. Provide training to further inform and empower volunteers serving on the Shade Tree Commission.
- iii. Provide CORE training to as many individuals as possible who are active volunteers.

CSIP 2 Shade Tree Ordinance Establishment

The Borough of Dumont passed a Shade Tree Ordinance in 2009. With Completion of the ordinance the Borough became eligible for Tree City USA designation. The Shade Tree Commission will continue to evaluate the Shade Tree Ordinance and adopted changes when possible. The Borough Shade Tree Ordinance is attached

to this plan. Due to situations which occurred in the past planning period the Borough will investigate an ordinance dealing with private trees, possibly through a zoning ordinance.

Goal: Develop an ordinance which provides the best management resource protection and management for the Borough.

Objectives:

1. Review the current ordinance to assure that it meets the needs of the Borough of Dumont.
2. Develop an ordinance that best protects the resource and the residents of Dumont.

CSIP 3 Public Education and Outreach

Public education, awareness and outreach are the most vital part of this plan and the cornerstone for a successful Community Forestry Program. The Dumont Shade Tree Commission has done extensive work toward this goal and has raised the profile of the community forest and its understanding by the general public. There has been extensive buy-in from elected officials, municipal employees and the public. The overall goal is to continue to enhance the community's awareness of Dumont's forest resource and the value and benefits of maintaining and improving this resource. With improved awareness will come improved volunteer recruitment and more successful activities and ultimately a successful community forestry program.

Public education projects will be coordinated and implemented by the Shade Tree Commission in cooperation with the Board of Education, PTA's, Library and Consulting Forester. Outreach and public education works towards creating a sustainable knowledge base for long term success that is resistant and resilient to change.

The Borough of Dumont Shade Tree Commission has been very active and efficient at coordinating education and outreach events. Below is a list of educational programs offered annually:

- A. Dumont Arbor Day held annually the last Saturday in April. These celebrations include:
 1. A ceremonial tree planting.
 2. A formal declaration by the Mayor.
 3. Presentation of the Annual Award of Merit by the Council Liaison.
 4. Contest awards for art, photography and poetry at Arbor Day celebration.
 5. Information distribution, various flyers and letters from local businesses leaders regarding trees and how they are good for business.
 6. Press releases are distributed to local media outlets and on the Shade Tree Commission website.

B. Art and poetry contest.

1. Open to all Dumont residents.
2. Press releases are distributed to local media outlets, on the Shade Tree Commission website and throughout the schools.

C. In the schools.

1. Arbor Day handbooks were delivered to the Board of Education for use by teachers.
2. PTA page is delivered for insertion in April PTA newsletters to the 4 elementary schools.
3. School PTA's were encouraged to conduct their own Arbor Day celebrations.
4. The Shade Tree Commission will enroll all the Third Grades in the Free Tree program through the New Jersey Tree Foundation, subject to PTA involvement.

A. Tree City USA Recognition

1. Recognition will be attained annually by the Dumont Shade Tree Commission for the near future and ultimately long term.

E. Dixon Library

1. Information is made available at the library which is available to all users.
2. Environmental Reading will be implemented for Pre-K students.

Future Outreach and Education

Future potential outreach and education include events coordinated by the Shade Tree Commission via funds solicited for the non-profit entity which will be created. Annual educational and outreach events and work days will be held at the Arboretum and Library.

The Arbor Day celebration will continue to be an annual event which will include a ceremonial tree planting, a Mayoral Proclamation and art and photography contest and a fund raising efforts for the Arboretum Programs.

Dumont Day which occurs in yearly in September is a major event in the Borough. The Shade Tree Commission will continue host an information table and distribute informational materials concerning the community forest, Arbor Day and Tree City USA, sponsor/host tree contests, and fund raise for the non-profit entity and future tree plantings.

Media communications are ongoing with inviting articles plus announcements in "Dumont Doings" posting section for all activities for the Dumont Shade Tree Commission and associated volunteer activities.

The Shade Tree Commission has formalized its Adopt A Tree program will continue to plant trees and build relationships with residents who will become future volunteers and advocates of the program. The Commission will continue to reach out to and work with local businesses and the Chamber of Commerce to reinvigorate the business district. Street trees will be re-introduced into the business district as part of this plan.

At least two press releases will be submitted yearly to local and regional newspapers and web media. Any tree planting, planning effort or tree management activity can serve as the basis for an article and public outreach. Other information will be posted on the Shade Tree Commission website and sent out via email. These press releases and outreach efforts serve three purposes. First, it will build a relationship with local reporters who at a later date may be more likely to publish submitted articles. Secondly, it creates an identity of the Shade Tree Commission/Public Works Department as a valuable source for credible information concerning natural resources. Lastly, it will increase understanding of the importance of the community forest resource and the planning effort and continue to build public support for the program.

Goal: To continue promote general tree awareness and stewardship among residents of the Municipality.

Objectives:

1. Produce tree and forest related educational materials for distribution at annual Arbor Day and Dumont Day celebrations.
2. Continue and build on the successes of art, poetry and photography contests conducted in association with the annual Arbor Day celebration.
3. Continue the web page including a link accessible from the Borough of Dumont official website which will provide residents up to date information concerning the community forest and the successes of the Community Forestry Program and Committee.
4. Facilitate an annual Arbor Day celebration in the Dumont Schools by empowering PTA volunteers.
5. Develop educational projects in association with the new Arboretum.
6. Initiate Pre-K education programs through the Dumont library.
7. Continue to facilitate creative outreach opportunities for the public.
8. Enroll all the third grades into the free tree program through the New Jersey Tree Foundation.

CSIP 4 Arbor Day Activities

Dumont will continue to celebrate Arbor Day with a Mayoral Proclamation to maintain Tree City USA status and to promote awareness to the public. The day will also include a ceremonial tree planting.

Goal: Enhance the community's awareness of the value provided by the community forest.

Objectives:

1. Continue the annual Arbor Day Celebration.
2. Submit articles for inclusion in local and regional newspapers.
3. Facilitate an annual Arbor Day celebration in the Dumont Schools by empowering PTA volunteers.

CSIP 5 Tree Inventory and Assessment

The Borough of Dumont completed a thorough assessment of its forest resource during the first planning period utilizing a CSIP grant. During this 2012 – 2016 planning period the Shade Tree Commission will maintain this database in its current excel format to track tree removals and plantings.

Goal: Maintain the inventory database as trees are planted, pruned and removed.

2. Continue to track the planting, pruning and removal of trees within the borough in a computer database.
3. Commit to the use of i-Tree data analysis tools.

CSIP 6 Hazard Tree Assessment

A hazard tree assessment was also completed during the first five year planning period. The most hazardous trees from the priority list have been removed. The Borough will continue to monitor the other potential hazard trees which were listed and conduct annual monitoring of these and other trees which may decline over time and create hazardous situations. Hazard trees will be removed as funding permits.

Goal: To continue to improve the safety and vigor of the Community Forest

1. Conduct annual surveys to gauge forest health and individual tree health, particularly trees on the original hazard tree list.
2. Continue to move through the hazard tree survey and removing trees from the list as funding permits and as trees age or become storm damaged.
3. Work towards establishing a pruning program and protocol for all newly planted trees.

4. Reduce conflict with utilities both above and below ground through proper tree selection for given sites and working with PSEG in the next pruning cycle.
5. Apply for grant funding to remove hazard trees.

CSIP 7 Storm Damage Assessment

The Borough of Dumont has not completed a storm damage assessment and due to a lack of funding may not do so. The Borough DPW works cooperatively with the neighboring municipalities DPW's to handle large scale tree emergencies. As this process has worked in ice storms and wind events the current status will remain in place.

Goal: To promote continued mutual aid agreements to facilitate the cleanup of catastrophic tree related damage during severe icy or wind events.

Objectives:

1. Continuously evaluate emergency response to tree related events with other municipalities, County and State Governments as well as private contractors.

CSIP 8 Tree Maintenance and Removal

As discussed prior, the community forest is an investment in the future and much like any infrastructure it needs constant maintenance to maximize its value. Pruning is one issue that is often cut from tight budgets and results in loss of function and an increase in safety hazards. Other maintenance issues include watering and mulching newly planted trees. Dumont has greatly improved the efficiency of its tree maintenance but with a limited tree budget it will be a challenge moving forward. The Borough is very fortunate to have a CTE on staff and working with the Borough. Working cooperatively with PSEG and Bergen County will continue in this planning period.

The Borough has spent well over \$36,000 on pruning and removals since the completion of the Community Forestry Plan.

Goal: Improve the health and safety of the community forest.

Objectives:

1. Continue to remove the hazard trees as funding becomes available.

2. Continue pruning efforts to reduce hazardous situations and improve overall forest and individual tree health.
3. Attempt to work out an agreement with PSEG on a pruning program.

CSIP 9 Insect and Disease Management

There are no specific goals in this planning regarding insect and disease management. With the potential for Emerald Ash Borer making its way into New Jersey over the next five years as it has been found in New York, Pennsylvania and Maryland it is just a matter of time. Other insect and disease issues that are looming are Gypsy Moth which is currently in a low population cycle, Bacterial Leaf Scorch which studies are showing that it is found not only on the streetscape but also in the forest and others. The Asian Long horned Beetle is also a pest that continues to “pop up” in the east. The Shade Tree Commission will continue to stay up to date on current conditions and potential forest health issues which may affect the community forest.

Goal: Maintain community forest health to provide as many environmental services and positive community benefits as possible for the Borough of Dumont.

Objectives:

1. Conduct continuous periodic monitoring of forest health issues throughout the Borough.
2. Creating awareness among the public of forest health issues and the importance of trees to the community will raise the status of the community forest cover and create municipal pride and ownership.
3. Educate residents on the current and future potential risks to forest cover in the Borough.

CSIP 10 Wildfire Protection

Wildfire is not a significant threat in the Borough of Dumont. There does not appear to be sufficient wild land to sustain a dangerous wildfire that would endanger structures. If the Shade Tree Commission is interested it may pursue becoming a Firewise Community if funding is available from the New Jersey Forest Fire Service.

No activity required.

CSIP 11 Tree Planting

The Shade Tree Commission will continue to work to plant trees under the Adopt-A-Tree Program, which was established in the 2008 Shade Tree ordinance. The Adopt-A-Trees are planted throughout the Borough in the Right of Way adjacent to private property in an attempt to reverse the loss of tree canopy due to removal of hazard trees and death of the aging large canopy trees. The planting program will assure canopy cover into the future. The Borough has dedicated at least \$1,000 annually toward tree planting projects since the Community Plan was approved and \$12,000 in total.

Goal: Develop resources to provide alternate funding for tree planting and maintenance programs

Objectives:

1. Create a non-profit group to raise funding for the Arboretum Tree Planting Programs.
2. Create a tree-planting program to honor citizens for recognition of exemplary performance or achievement.
3. Develop a tree-sponsoring program where local businesses or citizens can adopt a tree, which will be planted and placarded and maintained in honor of the named resident.
4. Apply for funding when available from New Jersey Forest Service CSIP program for planting.
5. Research other potential funding sources for tree planting, tree maintenance, hazard tree identification and educational programs.

CSIP 12 Tree Recycling

All trees that are storm damaged or removed are either taken from the borough by the tree service or utility completing the removal and chipped or cut into fire wood to sell. A protocol can be developed where a tree removed from a property could be left for firewood for the landowner.

Goal: Develop a program for more creative use of trees removed from the Borough.

Objectives:

1. Research the possibility of creating a homeowner firewood program where families in need could receive free or low cost firewood from tree removals within the Borough to reduce heating costs.
2. Create a program where trees removed from the Borough could be used as educational uses discussing history of the borough in the schools through a tree cookie or constructing benches from trees removed within the Borough.

CSIP 13 Sidewalk Maintenance

Street and sidewalk upgrades often damage tree root systems which results in increased stress and a health decline for the impacted trees.

Goal: Reduce the negative impact to tree root systems during curb and sidewalk replacement.

Objectives:

1. Work for creative solutions to protect tree roots during sidewalk replacement projects.
2. Raise awareness among residents and the Department of Public Works to the importance of protecting tree roots during sidewalk replacement.

CSIP 14 Storm Water Management

The Borough has a Storm Water Management Plan backed by a Storm Water Management Ordinance. The Shade Tree Commission will be examining the ordinance and related zoning text for possible additional modifications to be recommended to the Borough Council for adoption. CSIP #14 is a new state requirement, and will require this issue to be explored from the perspective of Shade Tree Management. Global warming appears to be increasing the frequency and severity of heavy storm events in recent years.

This CSIP #14 is not targeted at the current re-engineering the brook and low laying areas, although it is certainly related. The watershed encompasses the entire land area of the borough, not just the brook areas. So, for example, uphill tree planting would absorb significant water flow and relieve pressure on the sewer pipes and brook.

Shade Trees can mitigate the impact of storm events on Dumont, which is a part of the Hackensack River Watershed. Dumont is undergoing a 2011-2012 Borough Project for improvement of the Storm Sewers and water flow. There is a ground water problem in the two low areas by the brooks which impacts the neighboring homes. Other actions by the Borough which will improve Storm Water Management include: the removal of Hazard Trees, cooperation with PSE&G Pruning Cycle, and future plantings of the Adopt-A-Tree Program where only Small Trees of less than 25' mature height are planted directly under wires, and Medium (25'-50') and Large (over 50') Trees are set back from wires.

Goal: To continue to promote the Community Forest as an important storm water tool.

Objective:

1. Continue to advocate the planting of trees to reduce storm water runoff.
2. Offer common sense solutions to flooding issues within the Borough.



Twin Borough New Article 6/9/2011

Jillian Angelo, left, AmeriCorps NJ Watershed Ambassador, and Abbie Slaman of the Dumont Shade Tree Commission, map a section of Hirschfield Brook.

CSIP 15 Other

Goal: To encourage the creation of a non-profit group for the oversight and development of the Dumont Shade Tree Arboretum, and for administration of the Arboretum Programs.

Objectives:

1. To encourage the formation of the not-for-profit noted above.

7. Plan Implementation

Successful implementation of this plan will require a dedicated core of volunteers, community acceptance, and cooperation and buy in from municipal employees and elected officials. Based on participation during the planning period by volunteers and time and effort in coordinating the Arbor Day celebration and cooperative work with the Board of Education and Department of Public Works, Dumont is well on its way to a successful Community Forestry Program and long future as a Tree City USA.

This plan lays out specific actions to be carried out each of the next five years and the volunteer group or Borough Department responsible for implementation. This Implementation Timetable is a projected schedule. For this reason some projects may be completed and implemented earlier or later than projected in this plan.

At each Shade Tree Commission Meeting it will be clearly laid out who is responsible for the completion of each project on the agenda, who/whom is assisting in completing each task and a deadline for completion of each task. Long term projects will have progress reports reported on at each meeting. It is understood that the Borough of Dumont has limited pool of employees available to carry out this plan it will depend heavily on citizen involvement. Success will breed interest and each successful project should be promoted via a press release.

Implementation Timetable

2011 Objectives	Responsible Party
<ul style="list-style-type: none"> • CORE: Train New Volunteers as Needed • CEUs: 2 or more volunteers to meet NJ requirements 	Shade Tree Commission Dept. of Public Works Mayor and Council
<ul style="list-style-type: none"> • Establish "Fees & Penalty Schedule" to current ordinance 	Shade Tree Commission
<ul style="list-style-type: none"> • Arboretum for display of Shade Trees available under the Dumont Adopt-A-Tree Program. • Develop Adult Program • Develop Children's program • Publish letters and articles in community paper • Distribute Adopt-A-Tree Flyers • Website: www.dumontshadetree.org 	Shade Tree Commission Dept. of Public Works Mayor and Council
<ul style="list-style-type: none"> • Conduct Art, Poetry & Photography Contest with Awards to 	Shade Tree Commission Mayor and Council

<ul style="list-style-type: none"> be presented at Arbor Day Ceremony Ceremony to also include Boy Scout Flag Raising, National Anthem, Mayoral Proclamation, Annual Award of Appreciation, Tree Planting 	
<ul style="list-style-type: none"> Ongoing Inventory of Borough Street Trees Watershed Tree Inventory Commence use of iTree 	Shade Tree Commission Volunteers Consulting Forester
<ul style="list-style-type: none"> Coordinate with PSE&G for Wire Conflicts / 2011 Pruning Cycle Ongoing review and complaint assessment 	Shade Tree Commission
<ul style="list-style-type: none"> As needed based on storm activity Removal of Hazard Trees & Branches after Storms 	Shade Tree Commission Dept. of Public Works
<ul style="list-style-type: none"> Ongoing Removal of Hazard Trees & Branches 	Dept. of Public Works
<ul style="list-style-type: none"> Review Needs for Insect & Disease Management 	Shade Tree Commission
<ul style="list-style-type: none"> Coordinate with PSE&G for Wire Conflicts / 2001 Pruning Cycle 	Shade Tree Commission Dept. of Public Works
<ul style="list-style-type: none"> Adopt-A-Tree Program – Target 50 or more new Trees (this year) 	Shade Tree Commission
<ul style="list-style-type: none"> Wood Chipping of healthy branches and re-use in public spaces 	Shade Tree Commission Dept. of Public Works
<ul style="list-style-type: none"> Review Opportunities for Grants to Assist Homeowners and Commercial property Owners 	Shade Tree Commission
<ul style="list-style-type: none"> Dumont is undergoing work for storm water management, including certain reconstruction of underground pipes, and culverts at brooks. Public Education regarding Shade Trees and the Watershed 	Shade Tree Commission
<ul style="list-style-type: none"> Explore Re-Zoning Possibilities Establish Not-For-Profit Entity controlled by the Borough for assistance in management and fund raising for the Arboretum Explore Grant Opportunities. 	Shade Tree Commission
2012 Objectives	Responsible Party
<ul style="list-style-type: none"> CORE: Train New Volunteers as Needed CEUs: 2 or more volunteers to meet NJ requirements 	Shade Tree Commission Dept. of Public Works Mayor and Council
<ul style="list-style-type: none"> Zoning & Planning Ordinance Revisions 	Shade Tree Commission
<ul style="list-style-type: none"> Arboretum for display of Shade Trees available under the Dumont Adopt-A-Tree Program. Publish letters and articles in community paper Distribute Adopt-A-Tree Flyers Website: www.dumontshadetree.org 	Shade Tree Commission Dept. of Public Works Mayor and Council
<ul style="list-style-type: none"> Conduct Art, Poetry & Photography Contest with Awards to be presented at Arbor Day Ceremony Ceremony to also include Boy Scout Flag Raising, National Anthem, Mayoral Proclamation, Annual Award of Appreciation, Tree Planting 	Shade Tree Commission Mayor and Council

<ul style="list-style-type: none"> • Ongoing Inventory of Borough Street Trees • iTree Data Base Management 	Shade Tree Commission Volunteers Consulting Forester
<ul style="list-style-type: none"> • Coordinate with PSE&G for Wire Conflicts • Ongoing review and complaint assessment 	Shade Tree Commission Dept. of Public Works
<ul style="list-style-type: none"> • As needed based on storm activity • Removal of Hazard Trees & Branches after Storms 	Dept. of Public Works
<ul style="list-style-type: none"> • Address Needs for Insect & Disease Management 	Shade Tree Commission
<ul style="list-style-type: none"> • Adopt-A-Tree Program – Target 50 or more new Trees (this year) 	Shade Tree Commission
<ul style="list-style-type: none"> • Wood Chipping of healthy branches and re-use in public spaces 	Shade Tree Commission Dept. of Public Works
<ul style="list-style-type: none"> • Public Education regarding Shade Trees and the Watershed. 	Shade Tree Commission
<ul style="list-style-type: none"> • Re-Zone Arboretum as Special District • Management and fund raising for the Arboretum • Explore Grant Opportunities. • Management and fund raising for the Arboretum • Explore Grant Opportunities. • Adult Program • Children’s program 	Shade Tree Commission
<u>2013 Objectives</u>	Responsible Party
<ul style="list-style-type: none"> • CORE: Train New Volunteers as Needed • CEUs: 2 or more volunteers to meet NJ requirements 	Shade Tree Commission Dept. of Public Works Mayor and Council
<ul style="list-style-type: none"> • Establish “Fees & Penalty Schedule” in ordinance 	Shade Tree Commission
<ul style="list-style-type: none"> • Arboretum for display of Shade Trees available under the Dumont Adopt-A-Tree Program. • Publish letters and articles in community paper • Distribute Adopt-A-Tree Flyers • Website: www.dumontshadetree.org 	Shade Tree Commission Dept. of Public Works Mayor and Council
<ul style="list-style-type: none"> • Conduct Art, Poetry & Photography Contest with Awards to be presented at Arbor Day Ceremony • Ceremony to also include Boy Scout Flag Raising, National Anthem, Mayoral Proclamation, Annual Award of Appreciation, Tree Planting 	Shade Tree Commission Mayor and Council
<ul style="list-style-type: none"> • Ongoing Inventory of Borough Street Trees • iTree Data Base Management 	Shade Tree Commission Volunteers Consulting Forester
<ul style="list-style-type: none"> • Coordinate with PSE&G for Wire Conflicts • Ongoing review and complaint assessment 	Shade Tree Commission Dept. of Public Works
<ul style="list-style-type: none"> • As needed based on storm activity • Removal of Hazard Trees & Branches after Storms 	Dept. of Public Works
<ul style="list-style-type: none"> • Review Needs for Insect & Disease Management 	Shade Tree Commission
<ul style="list-style-type: none"> • Adopt-A-Tree Program – Target 50 or more new Trees (this year) 	Shade Tree Commission
<ul style="list-style-type: none"> • Wood Chipping of healthy branches and re-use in public 	Shade Tree Commission

spaces	Dept. of Public Works
<ul style="list-style-type: none"> Public Education regarding Shade Trees and the Watershed. 	Shade Tree Commission
<ul style="list-style-type: none"> Management and fund raising for the Arboretum Explore Grant Opportunities. Adult Program Children's program 	Shade Tree Commission
<u>2014 Objectives</u>	Responsible Party
<ul style="list-style-type: none"> CORE: Train New Volunteers as Needed CEUs: 2 or more volunteers to meet NJ requirements 	Shade Tree Commission Dept. of Public Works Mayor and Council
<ul style="list-style-type: none"> Arboretum for display of Shade Trees available under the Dumont Adopt-A-Tree Program. Publish letters and articles in community paper Distribute Adopt-A-Tree Flyers Website: www.dumontshadetree.org 	Shade Tree Commission Dept. of Public Works Mayor and Council
<ul style="list-style-type: none"> Conduct Art, Poetry & Photography Contest with Awards to be presented at Arbor Day Ceremony Ceremony to also include Boy Scout Flag Raising, National Anthem, Mayoral Proclamation, Annual Award of Appreciation, Tree Planting 	Shade Tree Commission Mayor and Council
<ul style="list-style-type: none"> Ongoing Inventory of Borough Street Trees iTree Data Base Management 	Shade Tree Commission Volunteers Consulting Forester
<ul style="list-style-type: none"> Coordinate with PSE&G for Wire Conflicts Ongoing review and complaint assessment 	Shade Tree Commission Dept. of Public Works
<ul style="list-style-type: none"> As needed based on storm activity Removal of Hazard Trees & Branches after Storms 	Dept. of Public Works
<ul style="list-style-type: none"> Review Needs for Insect & Disease Management 	Shade Tree Commission
<ul style="list-style-type: none"> Adopt-A-Tree Program – Target 50 or more new Trees (this year) 	Shade Tree Commission
<ul style="list-style-type: none"> Wood Chipping of healthy branches and re-use in public spaces 	Shade Tree Commission
<ul style="list-style-type: none"> Public Education regarding Shade Trees and the Watershed. 	Shade Tree Commission
<ul style="list-style-type: none"> Management and fund raising for the Arboretum Explore Grant Opportunities. Adult Program Children's program 	Shade Tree Commission
<u>2015 Objectives</u>	Responsible Party
<ul style="list-style-type: none"> CORE: Train New Volunteers as Needed CEUs: 2 or more volunteers to meet NJ requirements 	Shade Tree Commission Dept. of Public Works Mayor and Council
<ul style="list-style-type: none"> Establish "Fees & Penalty Schedule" in the ordinance 	Shade Tree Commission Dept. of Public Works Mayor and Council
<ul style="list-style-type: none"> Arboretum for display of Shade Trees available under the 	Shade Tree Commission

<p>Dumont Adopt-A-Tree Program.</p> <ul style="list-style-type: none"> • Publish letters and articles in community paper • Distribute Adopt-A-Tree Flyers • Website: www.dumontshadetree.org 	
<ul style="list-style-type: none"> • Conduct Art, Poetry & Photography Contest with Awards to be presented at Arbor Day Ceremony • Ceremony to also include Boy Scout Flag Raising, National Anthem, Mayoral Proclamation, Annual Award of Appreciation, Tree Planting 	Shade Tree Commission Mayor and Council
<ul style="list-style-type: none"> • Ongoing Inventory of Borough Street Trees • iTree Data Base Management 	Shade Tree Commission Volunteers Consulting Forester
<ul style="list-style-type: none"> • Coordinate with PSE&G for Wire Conflicts / 2015 Pruning Cycle • Ongoing review and complaint assessment 	Shade Tree Commission Dept. of Public Works
<ul style="list-style-type: none"> • As needed based on storm activity • Removal of Hazard Trees & Branches after Storms 	Dept. of Public Works
<ul style="list-style-type: none"> • Review Needs for Insect & Disease Management 	Shade Tree Commission
<ul style="list-style-type: none"> • Adopt-A-Tree Program – Target 50 or more new Trees (this year) 	Shade Tree Commission
<ul style="list-style-type: none"> • Wood Chipping of healthy branches and re-use in public spaces 	Dept. of Public Works
<ul style="list-style-type: none"> • Review Opportunities for Grants to Assist Homeowners and Commercial property Owners 	Shade Tree Commission
<ul style="list-style-type: none"> • Public Education regarding Shade Trees and the Watershed. 	Shade Tree Commission
<ul style="list-style-type: none"> • Management and fund raising for the Arboretum • Explore Grant Opportunities. • Adult Program • Children’s program 	Shade Tree Commission

8. Community Stewardship Incentive Program (CSIP) Funding

The completion of this plan will allow the Borough of Dumont to be eligible for CSIP grants when they are available to complete specific tasks laid out within the plan. As the Borough has limited funds, any CSIP funds that are made available will help to facilitate the implementation of the plan and completion of goals and objectives laid out in this plan will prove to be extremely beneficial.

Due to recent State budget problems many of these CSIP programs have not been funded in recent years.

CSIP 1 Training

The training laid out in this plan includes CORE training for at least one additional Borough employee as three volunteers have completed CORE training. The Community Forestry Act has stringent training requirements to maintain certification. Continuing Education training on topics specific to community forestry must be completed by both CORE trained volunteers and borough employees.

CSIP 2 Ordinance Establishment

A strong and enforceable tree ordinance serves as the backbone for the creation of the Shade Tree Commission and the maintenance of forest canopy cover in the Borough of Dumont. Should the Borough of Dumont pursue altering its ordinance it will apply for funding.

CSIP 3 Public Education and Awareness

Education and outreach activities are a huge component of this plan. Should any funds become available for these activities Dumont should apply for funding.

CSIP 4 Arbor Day Celebration

The Borough of Dumont will use creative methods in an attempt to raise funds for the purchase of street trees to be planted on Arbor Day Activities.

CSIP 5 Tree Inventory

A thorough assessment and inventory of the borough's tree resource was completed and will provide a baseline which can be used to gauge the effectiveness future activities and guide these activities to improve the

health and vitality of this resource. The Borough wants to move toward recording data in I Tree during the next planning period.

CSIP 6 Hazard Tree Assessment

The hazard trees noted during the inventory should be monitored annually to gauge health declines or new hazardous conditions.

CSIP 7 Storm Damage Assessment

If a disaster plan were developed this could help offset the cost of developing and implementing such a plan with cooperation from the Department of Public Works.

CSIP 8 Tree Maintenance and Removals

The recognition of the Community Forest resource as green infrastructure will facilitate the dedication of funds to carry out tree maintenance activities such as pruning, mulching and tree protection. Implementing these programs will result in a healthier, safer and more vibrant community forest. Funds could be applied for to remove hazard trees under this CSIP which would be beneficial to the Borough to offset costs.

CSIP 9 Insect and Disease Management

Street trees should be reevaluated as often is practical to inspect for any disease or insect outbreaks. Quick identification and treatment of such an outbreak will result in a healthier community forest and fewer trees being affected. Continued education will lead to more aware residents and early detection.

CSIP 10 Wildfire Protection

Wildfire is not a risk for the Borough of Dumont due to the lack of wild land to sustain such a fire. The Borough could review the possibility of becoming a Firewise Community.

CSIP 11 Tree Planting

Tree planting will begin on public and private land based on need. Planting should concentrate in focus areas which would be designated by the Shade Tree Commission. The ideal time for planting is the Spring or Fall. Funding for trees will be investigated including CSIP and other funds and grants which may be available outside the CSIP program.

CSIP 12 Tree Recycling

Street trees, which many times are removed and chipped, can provide a valuable source of timber and useful products. Every effort will be made by the Shade Tree Commission and Department of Public Works to find a way to recycle these trees and result in useable product for the Borough.

CSIP 13 Sidewalk Maintenance

The Borough should raise awareness of the damage to trees during sidewalk maintenance projects. Funding under this CSIP could be used to utilize creative solution to tree root/sidewalk conflicts.

CSIP 14 Storm Water Management

Storm water management is an important issue to the Borough of Dumont and this CSIP should be utilized to provide positive solutions to storm water management. The Shade Tree Commission will review the Borough's Storm Water Management Plan and investigate utilizing CSIP funds as a source of funding to help meet the goals. This could be tied into the recognition as Green Infrastructure.

CSIP 15 Other

The Dumont Shade Tree Commission in conjunction with the Borough of Dumont will encourage the creation of a non-profit group to provide funding for the Arboretum and future planting projects. The Borough may also work to remove invasive species and discourage residents from plating these species and utilizing native species.

--- END ---



2007
BOROUGH OF DUMONT
ORDINANCE

MEMBERS	AYE	NAY	ABSTAIN	ABSENT
ABRAHAMSEN	✓			
CASPARE				✓
MANNA	✓			
MCQUADE	✓			
STYLIANOU	✓			
ZAMECHANSKY	✓			
MAYOR MCHALE				
TOTALS	5			1

Ordinance 07-1322
No. _____
Date: February 20, 2007
Page 1 of 3
Subject: Shade Tree Commission
Purpose: _____
Account No. _____
Contract No. _____
Dollar Amount: _____
Prepared By: Gregg Paster, Esq.

Offered by: Stylianou
Seconded by: Abrahamsen
Approved by: _____

Certified as a true copy of an Ordinance adopted at 2nd reading by the Borough of Dumont on the above date at a Regular Meeting by: Susan Connelly

Susan Connelly, Acting Clerk, Borough of Dumont, Bergen County, New Jersey

SHADE TREE COMMISSION

An Ordinance of the Borough of Dumont, County of Bergen, State of New Jersey
An Ordinance Establishing the Borough of Dumont Shade Tree Commission

WHEREAS, the Borough of Dumont is known for its mature tree population; and

WHEREAS, there exists the need to create a comprehensive plan to maintain the health of shade trees on borough property and in the public right of way; and

WHEREAS, the Governing Body of the Borough of Dumont now seeks to establish a municipal Shade Tree Commission to fulfill all duties and functions consistent with NJSA 40:64-1 et seq., and to promulgate rules and regulations consistent therewith;

NOW THEREFORE, BE IT ORDAINED BY THE MAYOR AND COUNCIL OF THE BOROUGH OF DUMONT:

SECTION 1: Purpose

Pursuant to N.J.S.A. 40:64-1, this Ordinance shall establish the "Shade Tree Commission of the Borough of Dumont," consisting of five (5) members and two (2) alternate members appointed by the Mayor, who shall be residents of the Borough of Dumont, for the regulation, planting, care, and control of shade and ornamental trees and shrubbery upon and in the streets, highways, public places, parks and parkways of the Borough of Dumont. The two (2) alternate members, who shall be known as the "Alternate No. 1" and "Alternate No. 2," shall serve during the absence or disqualification of any regular member or members.

SECTION 2: Terms and Vacancies

Pursuant to N.J.S.A. 40:64-2, the terms of office of the Commissioners shall be as follows:

- A. The Commissioners shall be appointed within sixty (60) days after this Ordinance shall become effective, and their terms of the office shall commence upon the day of their appointment and be for the respective periods of one, two, three, four and five years, beginning on January 1 next succeeding such appointment.
- B. The two (2) alternate members of the Commission, "Alternate No. 1" and "Alternate No. 2," to be appointed pursuant to the terms of this chapter shall be appointed for terms of five (5) years and four (4) years, respectively, and they shall serve during the absence or disqualification of any regular member or members. An alternate member may participate in discussions of the proceedings but may not vote except in the absence or disqualification of a regular member of the Commission. All subsequent appointments of alternate members, except to fill vacancies, shall be for the full term of five (5) years, to take effect on January 1.

SECTION 3: Adoption of Rules and Regulations; Election of Officers and Employment of Other Personnel

Pursuant to N.J.S.A. 40:64-3 and 5, the Shade Tree Commission, when established, shall have the authority and power to make and adopt suitable rules, regulations and bylaws for the purpose of carrying out its objects; to elect a Chairman and Secretary from its members; to employ supervisors, assistants and other persons it deems

necessary and proper and to incur expenses, provided that its expenditures and obligations have been duly authorized and approved by the Mayor and Council of the Borough of Dumont. The Shade Tree Commission shall not have the authority to regulate or control the planting, removal or maintenance of trees located on private property or outside the public right-of-way, and shall not adopt, enact or enforce any rule, regulation or bylaw regulating such property, except as explicitly permitted by N.J.S.A. 40:64-5.

SECTION 4: Statutory Authority

The Shade Tree Commission created by this chapter shall exercise all powers now or hereafter granted by the statutes of New Jersey applicable thereto. Jurisdiction to enforce Shade Tree Commission policy pursuant to this Ordinance shall be by the Building department and Police department, as appropriate.

SECTION 5: Effective Date

This Ordinance shall be in full force and effect from and after its adoption and any publication as may be required by law.

BOROUGH OF DUMONT


Matthew P. McHale, Mayor

ATTEST:


Susan Connelly, Acting Borough Clerk

Introduced: January 16, 2007

Adopted: February 20, 2007

APPENDIX B – 2008 Dumont Shade Tree Ordinance



**2008
BOROUGH OF DUMONT
ORDINANCE**

MEMBERS	AYE	NAY	ABSTAIN	ABSENT
CASPARE	✓			
MANNA	✓			
MCQUADE	✓			
STYLIANOU	✓			
ZAMECHANSKY	✓			
MAYOR MCHALE				
TOTALS	5			

Ordinance No. 1358
Date: March 4, 2008
Page: 1 of 17
Subject: Shade Tree Rules & Regulations Ordinance
Purpose: _____
Account No. _____
Contract No. _____
Dollar Amount: _____
Prepared By: Gregg Paster, Esq.

Offered by: McQuade
Seconded by: Manna

Certified as a true copy of an Ordinance adopted at the 2nd reading by the Borough of Dumont on the above date at a Regular Meeting by: Susan Connelly

Susan Connelly, RMC, Borough Clerk
Borough of Dumont, Bergen County, New Jersey

DUMONT SHADE TREE RULES AND REGULATIONS ORDINANCE

An ordinance regarding Public Lands and Public Safety Interests to promote and regulate the preservation of Borough Trees, incorporate Community Forestry Management Plan, outline Tree removal procedures and requirements, and implement standards and procedures for compliance, and penalties for violations of the ordinance.

PURPOSE

The purpose of this ordinance is to promote the general welfare of the people of the Borough of Dumont by: (i) providing for the regulation, planting, care, control, improvement, removal, preservation, and general protection of Borough Trees in such a way as to protect and preserve the Borough environment with regard to Public Lands and Public Safety Interests; (ii) incorporate a Community Forestry Management Plan; (iii) providing for standards and procedures in connection with Borough Trees; and (iv) prescribing penalties for violations of this ordinance.

The Dumont Community Forest is recognized to be a living and constantly changing part of the Borough. As such, it is recognized that it is not possible to completely control, predict or prevent all events related to planting, growth, maintenance, decline, and death of Trees. However, the general objective of this ordinance is to establish a system for better managing this valuable resource through the Program established under the New Jersey Shade Tree and Community Forestry Assistance Act P.L. 1996, Chapter 135 and subsequent revisions thereto. The Community Stewardship Incentive Program Practices are:

1. Plan Preparation
2. Training
3. Public Education and Awareness
4. Arbor Day Activities
5. Assessment / Inventory
6. Tree Hazard Identification Plan
7. Tree Planting
8. Tree Maintenance
9. Tree Recycling
10. Ordinance Establishment
11. Tree Care Disaster Plan
12. Insect and Disease Management

Exemptions. The following shall be exempt from the requirements of this ordinance: (a) Bergen County Roads located in the Borough, without approval of the Bergen County Shade Tree Commission (if any) or, the Bergen County Department of Parks and Recreation; (b) any living woody, deciduous or coniferous species which does not qualify as a Tree under the definitions of this Ordinance; and (c) Utility and Cable Companies undertaking emergency tree work to restore service or spot work to prevent interruption of electrical, telephone, telegraph, cable TV, internet, or other wire or cellular services provided that such Utility or Cable Company has complied with notice provisions.

I. DEFINITIONS

As used in this ordinance, the following terms shall have the following meanings:

APPEAL: The process by which decisions of the Commission are reviewed and resolved when a Property Owner wishes to dispute the decision.

BOROUGH: The Borough of Dumont.

BOROUGH TREE: any Tree, as hereinafter defined, which is situated in or along any public property, park, field, public right of way, easement or encumbrance. Tree situation is evidenced by 50% or more of the root collar or base of the trunk at the entry point to the ground being upon Borough land, regardless of the location of the crown, roots, tilt of the trunk, or other part of the Tree in relation to the property line.

CODE ENFORCEMENT OFFICER: An individual appointed by the Shade Tree Commission, who may, but need not be, a Certified Tree Expert, a Certified Arborist, or who may be a Code Enforcement Officer of the Building, Police or Fire Departments as designated by the Mayor and Council. No person shall be reappointed or re-designated as Shade Tree Code Enforcement Officer unless the individual has completed the NJ DEP CORE Training within 12 months of the initial appointment.

COMMERCIAL BUFFER AREA: A landscaped buffer area along all commercial side yard and rear yard lot lines.

COMMISSION: The Shade Tree Commission of the Borough of Dumont including any of its agents, employees and duly appointed members. Also referred to herein as the "DSTC."

COMMUNITY FOREST: Collectively, all Trees in or upon all Public and Private Lands within the Borough of Dumont.

COMMUNITY FORESTRY MANAGEMENT PLAN: The Community Forestry Management Plan prepared from time to time for the benefit of the Borough, and as approved by the State of New Jersey, in keeping with the Community Forestry Program of the State of New Jersey.

DIAMETER BREAST HEIGHT (or "DBH"): The diameter of a Tree measured at a point on the Tree four feet and six inches (4'-6") from ground level.

GUARD: A device placed on or about a Tree with the purpose of preventing injury to such tree.

HAZARD TREE: A Tree that has structural defects in the roots, stem or branches and which may cause the Tree or part of the Tree to fail, and where such failure may cause property damage or personal injury. Risk levels are assessed at low, medium or high in accordance with the USDA publication #NA-TP-03-03 entitled "Urban Tree Risk Management".

HERITAGE TREE: Any Tree: (i) with a DBH of at least thirty six (36") inches; or (ii) of a particular historical significance specifically designated by official action of the Mayor, the Borough Council, the DSTC or the Borough Historian; or (iii) over 50 years of age.

LANDSCAPER: Any Person engaged in the business of landscaping as a primary occupation.

LARGE TREES: Tree species attaining a height of fifty (50) feet or more at maturity.

MEDIUM TREES: Tree species attaining a height of twenty-five (25) feet to fifty (50) feet or more at maturity.

SMALL TREES: Tree species attaining a height of less than twenty-five (25) feet at maturity.

MEMBERS: Duly appointed Members of the Commission.

OVERGROWN TREE: A Tree that has exceeded a confined space as evidenced by less than fifteen (15%) percent of the DBH as clearance between the root collar at ground level and a confining border such as a curb or sidewalk. (Example: A Tree with 20" DBH would require 3" between the root collar where it enters the ground and the sidewalk or curb).

PERSON: Any individual, association or individuals, partnership, corporation, developer, or entity other than the Borough.

PLANNING BOARD: The Planning Board of the Borough of Dumont.

PRIVATE TREE: any Tree, as hereinafter defined, which is situated in land other than Borough Land. Tree situation is evidenced by 50% or more of the root collar or base of the trunk at the entry point to the ground being upon private land, regardless of the location of the crown, roots, tilt of the trunk, or other part of the tree in relation to the property line.

RIGHT OF WAY ("ROW"): The public property in the Borough of Dumont, which excludes private property, and is the jurisdiction of the Borough, and is inclusive of all land in and along any Street up to the private property lines as shown on the Tax Map of the Borough of Dumont.

SPECIMIN TREE: Any Tree, which, by singular nature, species, condition, size, or location, imparts particular value to a property or landscape specifically designated by official action of the Mayor, the Borough Council, the DSTC or the Borough Historian.

STREET: Any road, avenue, street or highway in the Borough dedicated to the public use.

TREE: Any living woody, deciduous or coniferous species, of any age after germination, which at maturity is expected to have a circumference of more than ten (10") inches, or three (3")

inches diameter, measured at DBH. Any species not qualifying as a "Tree", under this definition, shall be considered a "Stem" and shall not fall within the purview of this ordinance.

TREE ACCOUNT: A segregated interest bearing account where the use of the funds is restricted under this ordinance.

TREE GUARD: A permanent enclosure used to protect the trunk of a tree from injury.

TREE PIT: A specially prepared area of land, which is surrounded by paving, curbs, sidewalks, or other impervious surfacing, and with specific requirements for protection and pedestrian safety.

TREE PERMIT: A Permit issued by the Code Enforcement Officer, for the planting, maintenance or removal of a Tree or Trees on Borough Land.

TREE REPLANTING REQUIREMENT: A requirement to plant new Trees when Trees are removed, or under other conditions of this Ordinance.

TREE TOPPING: The severe cutting back of limbs to stubs larger than three (3") inches in diameter within the Tree's crown, to such a degree so as to remove the normal canopy and disfigure the tree except where other pruning practices are impracticable or impossible with respect to Trees severely damaged or causing obstructions to wires or cables subject to Cable and Utility Company exemption.

URBAN TREE RISK MANAGEMENT: A publication of the USDA Forest Service # NA-TP-03-03 of complete title: "Urban Tree Risk Management: A Community Guide to Program Design and Implementation."

UTILITY AND CABLE COMPANY: Public utility or cable television companies entering the Borough for the purpose of erecting, installing, moving, removing, altering, or maintaining any structures or fixtures necessary for the supply of electric light, heat or power, communication, or cable television, cellular communications, or internet services.

II. COMMUNITY FORESTRY MANAGEMENT PLAN

Unless otherwise excepted by the Borough as inconsistent with the overall master plan or not in the best interests of the Borough, the Community Forestry Management Plan dated 10/16/06 is hereby adopted and the policies and procedures contained therein are incorporated by reference, including, by way of example and not limitation, the provisions involving goals, administration, training, public education, awareness and outreach, Tree inventory, hazard management, planting, maintenance, waste recycling, and disaster plans. To the extent there shall be any inconsistencies between this ordinance and the Community Forestry Management Plan, this ordinance shall govern. The Borough may require the Community Forestry

Management Plan be amended, modified, or supplemented to comply with or effectuate the purpose of this ordinance or any amendments thereto.

The Community Forestry Management Plan shall be periodically updated for submission and approval, upon the timetable established or required by the State of New Jersey, for compliance with the New Jersey Community Forestry Program under the New Jersey Shade Tree and Community Forestry Assistance Act, P.L. 1996, Chapter 135, or as amended. Revised Community Forestry Management Plans shall be adopted by the Borough prior to submission to the State of New Jersey, subject only to modifications required by the State for approval.

III. GENERAL PROTECTION AND MAINTENANCE REQUIREMENTS

Construction. All Persons who shall conduct, or cause to be conducted, any erection, repair, alteration, construction, or other similar act near any Tree, shall use best efforts to protect and preserve the Trees in and about the area of such conduct.

Tree Maintenance of Borough Trees. The Borough shall have the right to plant, prune, maintain and remove trees, plants and shrubs within the Borough as may be necessary to insure public safety, preserve or enhance the beauty or symmetry or public grounds, or effectuate the intent and purpose of this ordinance. The Borough may remove or cause to be removed any Tree or part thereof which is in an unsafe condition or which may be injurious to sewers, electric lines, gas lines, water lines, or other public improvements, or which is or may be infected with any fungus, insect, or pest.

Borough Projects. In the event that the Borough Engineer has determined that one (1) or more Borough Trees must be removed a) for the benefit of a Borough Project, or b) due to one (1) or more Borough Trees becoming a Hazardous Tree due to a Borough Project, then

- a. The Borough Tree(s) and the stump(s) shall be removed, and,
- b. The Borough Tree(s) shall be replanted on a one (1) for one (1) basis, in accordance with the Planting Requirements of this Ordinance, and,
- c. The cost of the removal(s) and replanting must be a part of the Project Cost, and,
- d. Adjacent Property owners shall be notified and offered the option to participate in the Adopt-a-Tree Program.

Prohibited Actions: The following practices are prohibited and shall constitute a Violation if such practice continues by the same person, Landscape Company, or on or near the same private property.

Notice of the Violation condition shall allow a 7 calendar day grace period after which the property owner shall be subject to the proscribed Violation Penalty if the condition remains or continues.

Second Violations of the same type for the same property owner shall not allow such grace period.

Violation Types 1, 2 and 4 shall not allow such grace period.

Violation Type 1 - Unauthorized Removal:

- a. Unauthorized removal of a Borough Tree.

Violation Type 2 – Vandalism or Severe Preventable Damage:

- a. Malicious vandalism of any Borough Tree.
- b. Cut, break, injure, disturb, install nails or other metal objects into, or interfere in any material manner with any Borough Tree, or Tree in a Commercial Buffer Area;
- c. Roots cut from a Borough Tree in such a manner to destabilize the Borough Tree.
- d. Conduct any excavation without a Permit within four (4') feet of any Borough Tree; and/or
- e. Engage in any Tree Topping of a Borough Tree as defined in this ordinance.
- f. Spray any Borough Tree or near any Borough Tree, any chemical which may cause injury or death to said Borough Tree, or place salt, brine, oil, or any other substance which is or may be injurious to plant growth on the ground, sidewalk or street area within 30' of the base of the Borough Tree.

- g. To build fires or station any kettle, road roller, fuel oil dispensing truck, or other engine in any street or other public place in such a manner that the heat, vapors, fuel or fumes may injure a Borough Tree.

Violations Type 3 - Other:

- a. Mulch installed to more than 6" deep at the base of a Borough Tree.
- b. Motorized trimmers and lawn mowers utilized in such a way to damage the bark or cambium layer of a Borough Tree.
- c. Soil applied in excess of 6" deep on top of the soil at the area under the drip line of a Borough Tree.
- d. To remove or injure any guard or device placed to protect any Borough Tree.
- e. To place salt or other substances injurious to plant growth in any street, park, and public place in such a manner to injure any Borough Tree.
- f. Fasten any rope, wire, sign, or other device to any Borough Tree or to any Guard about such Borough Tree;
- g. Close or obstruct any open space about the base of any Borough Tree which would prevent the access of air, water, and fertilizer to the roots of such Tree;
- h. Every person having or maintaining utility lines in the street, park or public place shall maintain such lines in a manner as will safeguard the Borough Tree against damage and make periodic adjustments whenever necessary to prevent damage to Borough Trees.
- i. Place or maintain in any street or ROW or park, any stone, cement, or other sidewalk or other substance which may impede the free access of air and water to the roots of any Borough Tree, and, where any Borough Tree is surrounded by pavement of stone, placement of cement or asphalt or any other substance tending to impede the free access of air and water to the roots of any Borough Tree;

Violation Type 4 – Heritage or Specimen Tree:

- a. Violations, as listed above, against a Heritage Tree.

b. Violations, as listed above, against a Specimen Tree.

Borough Intervention for Public Safety. The Borough may notify in writing any property owners of any Tree(s) which may, for any reason, threaten public safety, and require the removal of any such Tree(s), or pruning of such Tree limbs, at the owner's expense and in accordance with the requirements of this ordinance with such removal to occur within thirty (30) days of the date of such notice. The Borough may remove such Tree(s), or prune such Tree limbs, in the event of owner's failure to cause such removal, and the costs thereof shall be included in the next property tax bill rendered to the owner. The Borough or the Commission shall give reasonable notice of its intention to remove or prune, or cause the removal or pruning of any Tree(s), or part thereof, unless public safety requires immediate removal, in which case no notice shall be necessary.

Diseased Trees: The Commission shall have the power to administer treatment to or remove any Tree(s) situated upon Private Land which is believed to harbor a disease or insects, or is within the recommended radius of a Tree which is believed to harbor a disease or insects, readily communicable to neighboring healthy trees in the care of the Borough. The Borough shall have the right to enter upon Private Land for that purpose, with notice to the Property Owner thereof, provided that the suspected condition is first confirmed by a certificate by or on behalf of the Department of Agriculture. The cost of such treatment or removal shall be borne by the Borough.

Sewer Service Mains. All sewer service mains from private improvements to the point of tap at the public sewer main are the responsibility of the Property Owner to maintain regardless of the origination of any Tree roots or other Tree related problem. The Borough shall not be responsible for clearance of Tree roots, or replacement of sewer piping, or any other affiliated expense of sewer service mains. In the event that repair or replacement of the sewer main pipe would destabilize a Borough Tree(s) and cause it (them) to become a Hazard Tree(s) according to USDA Forestry guidelines, then the Property Owner must remove and replace the Borough Tree(s) at the Property Owner's expense. The replacement Tree must comply with the Planting Requirements of this Ordinance.

Overhead Utility Lines. Property Owners shall not prune or cause to be pruned any portion of any Tree within ten (10') feet vertical or horizontal distance of a utility wire, inclusive of electric, cable and telephone wiring. Issues pertaining to such wires shall be reported to the Utility Company.

Sidewalk Repairs and Replacements. Property Owners are responsible for the maintenance of sidewalks at all times. In the event that sidewalk work for repair or replacement

becomes necessary for any reason, the Property Owner must obtain a Permit from the Department of Buildings. The Permit process shall include a review by the DSTC of any Borough Tree(s) within the ROW.

In the event that repair or replacement of the sidewalk, in like and kind, would destabilize the Borough Tree(s) and cause it (them) to become a Hazard Tree(s) according to USDA Forestry guidelines, then the Property Owner must remove and replace the Borough Tree(s), on a one for one basis, at the Property Owner's expense unless the Property Owner meets both of the following two requirements of Proof:

- a. Proof that one, or a combination of, the following options cannot be done to avoid creating a Hazard Tree condition:
 - i. Re-route the sidewalk, within the ROW, with a minimum sidewalk width of three (3') feet and a clear distance of at least twenty-five (25%) percent of DBH from the edge of the new sidewalk to the point where the root collar enters the soil, AND/OR,
 - ii. Re-grade soils and the sidewalk, but the new sidewalk slope shall not exceed 1:12 ratio, or current ADA handicapped accessibility standards, and the soil height shall not be increased more than 6", AND/OR
 - iii. Use alternate materials, but such materials shall have a warranty period of at least ten (10) years.
- b. Proof that the Borough Tree(s) meet the definition of an Overgrown Tree.

The Property Owner must provide such proof along with any notice to the DSTC that the Borough Tree(s) requires removal at Borough expense.

The replacement Tree(s) must comply with the Planting Requirements of this Ordinance.

IV. PLANTING REQUIREMENTS

No Person shall plant any tree in any Park or Street, or other Public Land, or in the ROW, without a Permit or written direction from the DSTC. Planting in Private Land is not governed by or regulated by this Article.

The DSTC may waive or modify required planting locations if field conditions or mitigating circumstances exist, such waiver or modification to be in writing only.

Adopt-a-Tree Program:

If the DSTC or the Borough deems that a new Tree or replacement Tree shall be planted, then the Borough may plant within the ROW as determined by the DSTC. Property Owners shall be given the opportunity to participate in the Adopt-a-Tree Program, which shall be reviewed periodically by the DSTC and shall, at a minimum meet the following criteria:

- a. The Property Owner may select a tree from the appropriate DSTC approved list.
- b. The Property Owner shall water the Tree after planting once a day for a week, once a week for a month and once a month for a year. Approved DSTC guidelines for watering shall be followed.
- c. The Borough of Dumont shall maintain the tree.

DSTC Approved Tree Lists:

The DSTC shall periodically review and approve lists of Small, Medium and Large Trees for planting in Public Lands in the Borough. Such lists shall be made readily available to the public.

Planting Technical Criteria and Requirements:

- 1. Minimum Spacing Between Trees: The spacing for planting of street trees shall be in accordance with the three (3) size classes listed under Definitions, as follows:

	Small Tree	Medium Tree	Large Tree
Small Tree distance to the nearest	15'	15'	15'
Medium Tree distance to the nearest	15'	30'	30'
Large Tree distance to the nearest	15'	30'	40'

1. Confining Elements: When practicable, the planting distance from curbs or curb lines and sidewalks or other paved areas shall be in accordance with the three (3) size classes listed under Definitions, as follows: for a Small Tree, shall be one-foot and three inches (1'-3"); for a Medium Tree shall be two (2') feet and for a Large Tree shall be four (4') feet.
2. Distance from Utilities: The distance from the center of the tree to the vertical plane through a utility line shall be as follows:

	Small Tree	Medium Tree	Large Tree
Underground water, gas or sewage mains, or oil fill pipes, or coal fill chute	6'	12'	16'
Overhead electric, telephone and cable wires	0'	4'	4'

3. Tree Collar Damage Prevention: There shall be kept clear of lawn, vegetation and weeds an area of a minimum of one (1) foot around the base of newly planted trees. The intent of this section is to prevent injury to the newly planted trees from lawn mowers and trimmers.
4. Fire Safety: No Street Trees, or other woody plant material shall be planted, or allowed to branch into the ROW within:
 - a. Fifteen (15') feet of a fire plug, a standpipe connection, or any other water connection point for Fire Department use, or
 - b. The area directly in front of the entrance and egress doors to a building.
5. Traffic and Pedestrian Safety: No Street Trees, or other woody plant material shall be planted, or allowed to branch into the ROW within:
 - a. Twenty (20') feet of the mid-point of the curb corner at any intersection,
 - b. Seven (7') feet of a curb cut,
 - c. A location where the roadbed curves, in such a manner to block the view of drivers exiting any curb cut.
 - d. Twenty five (25') feet of a street light.

- e. Thirty (30') feet of a stop sign, traffic light.
- f. Six (6') feet of other traffic signs.
- g. The area between five (5') feet and fifteen (15') feet behind a parking meter where car doors are anticipated to open.
- h. A zone where such tree or woody plant material does not allow a clear three (3') wide pedestrian walkway to be maintained.
- i. A zone within five (5') feet from the curb at bus stops, for the full length of the bus in the stopped position.

6. Other Planting Requirements:

- a. Tree species must be selected from the DSTC Approved Tree Lists of Small, Medium or Large Trees, or shall be reviewed by the DSTC on a case by case basis for authorization to plant.
- b. Three (3) or more trees of the same species may not be planted in immediate sequence proximity to each other. The purpose of this is to encourage biodiversity.
- c. Tree(s) may be planted on either side of sidewalks in lawn areas where there is sufficient room within the ROW, however, the center of the new Tree shall be set in at least one-foot six-inches (1'-6") from the ROW border line.
- d. Tree(s) may be planted in a Tree pit at the curb line of a sidewalk, where the sidewalk extends to the curb, provided that the remaining sidewalk is not less than three (3') feet clear, and provided that the tree pit is paved with a porous surface, such as cobbles or pavers set in sand, and that the tree pit is of the following sizes:

Tree Size:	Minimum Tree Pit Size:
Small Tree	3' x 4'
Medium Tree	5' x 10'
Large Tree	10' x 10'

V. COST OF TREES, MAINTENANCE AND IMPROVEMENTS

Borough Expenses:

The Borough shall bear the cost of the following Community Stewardship Incentive Program (CSIP) goals:

- CSIP 1 Plan Preparation
- CSIP 2 Training in accordance with the NJ DEP Community Forestry Program.
- CSIP 3 Public Education and Awareness
- CSIP 4 Arbor Day Celebration
- CSIP 5 Assessment and Inventory
- CSIP 6 Tree Hazard Identification Plan
- CSIP 7 Tree Planting
- CSIP 8 Tree Maintenance
- CSIP 9 Tree Recycling
- CSIP 10 Ordinance Establishment
- CSIP 11 Tree Care Disaster Plan
- CSIP 12 Insect and Disease Management
- CSIP 13 Other Expenses related to Borough Trees

Voluntary Planting and Maintenance Expenses:

Private Property Owners may apply to the Commission to voluntarily plant or maintain a Tree or Trees in the ROW abutting the Private Property. Permission shall be granted, provided the planting complies with this ordinance and other policies as approved by the Commission under an "Adopt-a-Tree Program". Voluntary plantings or maintenance costs may be borne by the Property Owner at one point in time, but this event does not obligate the Property Owner to bear future costs of maintenance or removal.

Fee and Violation Penalty Schedule:

The DSTC shall review and propose updates to the Fee Schedule for Tree Permits, Licensing, and for Violation Penalties at not more than 24 month intervals. Such fees shall not exceed the maximum amounts allowed by the NJ DEP Community Forestry Program. All such fees and violation penalties shall be deposited to the Segregated Tree Account.

The revised Fee and Violation Penalty Schedule shall be submitted to the Borough Council and shall be made effective only by a majority vote of the Borough Council.

Segregated Tree Account and Use of Funds:

All Tree Permit Fees shall be deposited to a segregated interest bearing account (Tree Account) administered by the Borough, and held for use as determined and directed by majority vote of the Commission during a regular meeting. Such funds may not be utilized to offset the annual Tree Budgetary expenditures of the Borough. Such funds may be utilized for the purposes of (i) Tree planting; (ii) public education regarding Trees; or (iii) Arbor Day observance or recognition.

VI. TREE PERMITS, PERMIT REVOCATION & LICENSING

Tree Permit:

The Tree Permit process shall be administered through the Department of Buildings, and shall include review and approval by the DSTC prior to issuance.

A Tree Permit is required in the event that a Property Owner intends to conduct any of the following types of work in the ROW:

- a. Repair, remove or replace a sidewalk;
- b. Remove or maintain a Tree;
- c. Plant a Tree.

Tree Permit Fees, as set by further enactment of the Borough of Dumont Mayor and Council, shall be paid prior to issuance of the Tree Permit in accordance with the Fee Schedule. All such fees shall be deposited to the Segregated Tree Account.

Tree Permit Revocation:

The DSTC or the Borough Council, through the Code Enforcement Officer, may revoke a Tree Permit where there has been a false or misleading representation, or where the Certificate of Insurance of a Landscaper or Tree Contractor has been revoked or expired.

VII. INTERFERENCE WITH BOROUGH OR COMMISSION

It shall be unlawful for any person to prevent, delay, interfere or impair the Borough, the DSTC, or any of its agents, while engaging in any act to affect the purpose of this ordinance.

VIII. VIOLATIONS AND PENALTIES

Any person who violates any of the provisions of this Ordinance or who fails to comply with the terms and provisions of any permit issued pursuant hereto shall upon conviction in municipal court thereof, be liable for a fine at the discretion of the court in accordance with the Violation Penalty Schedule. Each day that a violation shall continue shall constitute a separate offense.

IX. APPEAL PROCEDURES

Property Owners may Request to Appeal decisions of the Commission under the following procedure:

1. The Property Owner must submit a Request in writing to the Commission inclusive of their reasons and third party evidence upon which the Appeal will be based. Examples of third party evidence are photographs, surveys, authoritative documents, expert reports or other evidence in support of the Request.
2. The Commission shall have not more than 30 days from the date of receipt of the written documents to review the information and may respond with (i) a reasonable request for additional information; (ii) acceptance of the Property Owner's request, or (iii) rejection of the Property Owner's Request with reasons stated. If additional information is subsequently submitted, then the commission shall have an additional 30 days from the date of submission of the additional information to either accept or reject, with reasons stated, the Property Owner's Request.
3. In the event that the above conditions are met, and the Commission has continued to reject the Property Owner's Request, then the Property Owner may present the same request and the same information to the Borough Administrator. The Borough Administrator shall not have more than 30 days from the date of receipt of the written documents to review the information and may respond with a reasonable request for additional information. If all of the additional information requested is subsequently submitted, then the Borough Administrator shall have an additional 30 days to present the Request to the Mayor and Council who will decide to either accept or reject the Property Owner's Request with reasons.
4. In the event that the above conditions are met, and the Mayor and Council have rejected the Property Owner's Request, then and only then, will all administrative remedies be considered exhausted, and the Property Owner may pursue other legal options.

The cost of obtaining and submitting any reasonably requested information shall be at the expense of the Property Owner regardless of the outcome of the Appeal.

X. NO LIABILITY

Nothing in this ordinance shall be construed to make the Borough or the Commission nor any Member responsible for the death or injury of any person, or for injury to any property or Tree. Liability for any such death or injury shall be governed by relevant provisions of the New Jersey Tort Claims Act (N.J.S.A. 59:1-1).

XI. SEVERABILITY

The various sections of this ordinance, including articles, sections, sentences, clauses, phrases and words, are severable, and if any part is held to be unconstitutional or invalid, such decision shall not affect the remaining portions of this ordinance.


XII. EFFECTIVE DATE

This ordinance shall take effect immediately upon publication thereof.

BOROUGH OF DUMONT


Matthew P. McHale, Mayor

ATTEST:


Susan Connelly, Borough Clerk

Introduced: February 19, 2008

Adopted: March 4, 2008