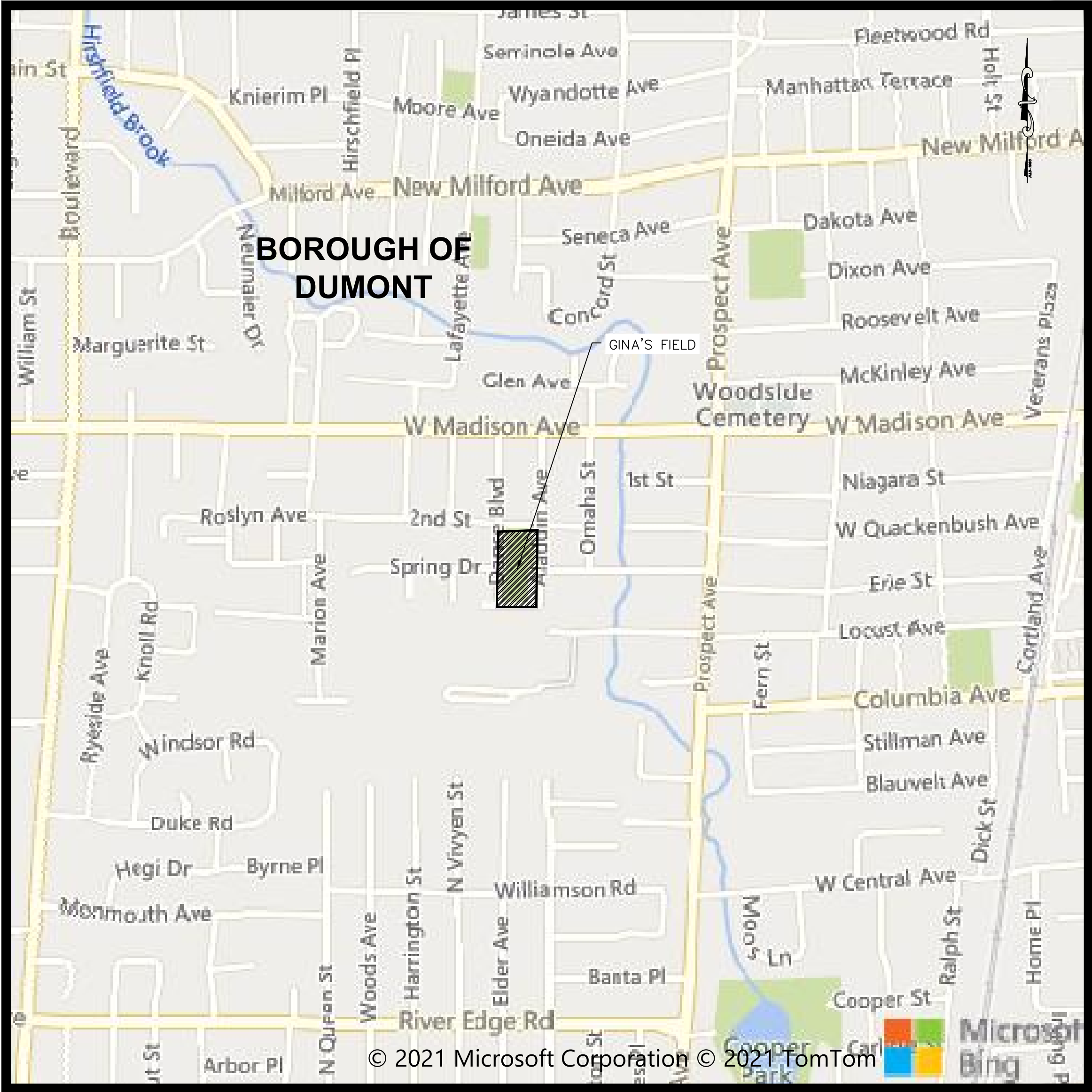


GINA'S FIELD PARK IMPROVEMENTS

LIST OF UTILITIES AND EMERGENCY CONTACT INFORMATION	
SEWER:	BOROUGH OF DUMONT 80 WEST MADISON AVENUE DUMONT, NJ 07628 201-387-5022 ATTN: ANTHONY SCHIRALDI
WATER:	SUEZ WATER 60 DEVOE PLACE HACKENSACK, NJ 07601 201-457-7964
ELECTRIC:	PUBLIC SERVICE ELECTRIC AND GAS CO. 80 PARK PLAZA, T-12 NEWARK, NEW JERSEY 973-297-2128
GAS:	PUBLIC SERVICE ELECTRIC AND GAS CO. 80 PARK PLAZA, T-12 NEWARK, NEW JERSEY 973-297-2128
TELEPHONE:	VERIZON 114 PATERSON STREET PATERSON, NEW JERSEY 07501
CABLE:	CABLEVISION 5 LEGION DRIVE CRESSKILL, NEW JERSEY 07626



PROJECT LOCATION MAP

SCALE: 1" = 500'

THE ELECTRONIC VERSION OF THE 2019 NEW JERSEY DEPARTMENT OF TRANSPORTATION STANDARD SPECIFICATIONS FOR ROAD AND BRIDGE CONSTRUCTION, EFFECTIVE SEPTEMBER 1, 2019, AS REFERENCED IN BASELINE DOCUMENT CHANGE ANNOUNCEMENT BDC19S-01, UNLESS MODIFIED WITHIN THE TECHNICAL SPECIFICATIONS OF THIS CONTRACT, SHALL GOVERN.

THE NEW JERSEY DEPARTMENT OF TRANSPORTATION "STANDARD ROADWAY CONSTRUCTION\TRAFFIC CONTROL\BRIDGE CONSTRUCTION DETAILS" BOOKLET DATED 2016 AND "ELECTRICAL BUREAU STANDARD DETAILS, 2016" AND ALL BASELINE DOCUMENT CHANGES MADE TO THESE CONSTRUCTION DETAILS, SHALL GOVERN, EXCEPT FOR THOSE DETAILS CONTAINED HEREIN.

BOROUGH OF DUMONT BERGEN COUNTY, NEW JERSEY

JULY, 2021

SHEET INDEX	
SHEET #	DESCRIPTION
1	TITLE SHEET
2	LEGEND
3	GENERAL NOTES & QUANTITIES
4	EXISTING CONDITIONS PLAN
5	DEMOLITION PLAN
6	CONSTRUCTION PLAN
7	GRADING PLAN
8	UTILITY PLAN
9	EQUIPMENT ENLARGEMENT
10	SOIL EROSION SEDIMENT CONTROL PLAN
11	DETAIL SHEET #1
12	DETAIL SHEET #2
13	DETAIL SHEET #3
14	SESC DETAILS
15	FOUNDATION PLAN
16	ELECTRICAL COVER SHEET
17	ELECTRICAL PLAN SHEET

DUMONT BOROUGH COUNCIL	
MAYOR	ANDREW LABRUNO
COUNCIL MEMBERS	JIMMY CHAE DAMON ENGLESE CONNOR GORMAN CARL MANNA LISA ROSSILLO CAROLE STEWART
TOWNSHIP/ CITY CLERK	JEANNINE SIEK

FUNDING SOURCE:
GREEN ACRES, BERGEN COUNTY OPEN SPACE, AND LOCAL



New Jersey One Call
CALL BEFORE YOU DIG
811 or 1-800-272-1000
IT'S THE LAW

IT IS THE RESPONSIBILITY OF THE CONTRACTOR TO CONTACT NJ ONE CALL PRIOR TO THE START OF CONSTRUCTION. CALL FOR MARKOUTS THREE (3) FULL BUSINESS DAYS IN ADVANCE AND BEGIN EXCAVATION WITHIN 10 DAYS. ALL CONTRACTORS ON-SITE MUST HAVE THEIR OWN MARKOUT.



REMINGTON & VERNICK ENGINEERS
ONE HARMON PLAZA, SUITE 210
SECAUCUS, NJ 07094
(201) 624-2137, FAX (201) 624-2136
WEB SITE ADDRESS : WWW.RVE.COM
Certification of Authorization: 24 GA 28003300
~ENGINEERING EXCELLENCE~

DATE:
PAUL D. CRAY
NJ PROFESSIONAL ENGINEER LIC. No. 37458

DATE:
ROBERT J. KLEIN
NJ PROFESSIONAL ENGINEER LIC. No. 42897

PLANS WHICH DO NOT BEAR AN EMBOSSED SEAL ARE NOT VALID.
ALL DOCUMENTS PREPARED BY REMINGTON & VERNICK ENGINEERS AND AFFILIATES ARE INSTRUMENTS OF SERVICE IN RESPECT OF THE PROJECT. THEY ARE NOT INTENDED OR REPRESENTED TO BE SUITABLE FOR REUSE BY OWNER OR OTHERS ON EXTENSIONS OF THE PROJECT OR ON ANY OTHER PROJECT. ANY REUSE WITHOUT WRITTEN VERIFICATION OR ADAPTATION BY REMINGTON & VERNICK ENGINEERS AND AFFILIATES FOR THE SPECIFIC PURPOSE INTENDED WILL BE AT OWNERS SOLE RISK AND WITHOUT LIABILITY OR LEGAL EXPOSURE TO REMINGTON & VERNICK ENGINEERS AND AFFILIATES. AND OWNER SHALL INDEMNIFY AND HOLD HARMLESS REMINGTON & VERNICK ENGINEERS AND AFFILIATES FROM ALL CLAIMS, DAMAGES, LOSSES AND EXPENSES ARISING OUT OF OR RESULTING THEREFROM.

TITLE SHEET

BOROUGH OF DUMONT
GINA'S FIELD PARK IMPROVEMENTS

BOROUGH OF DUMONT
BERGEN COUNTY
NEW JERSEY

DRAWN BY:	DESIGN BY:	CHECKED BY:	SCALE:
A.P.	D.J.N.	D.J.N.	AS NOTED
DATE:		SHEET No.:	
7/9/2021		1	of 17
JOB No.:			
0210T035			



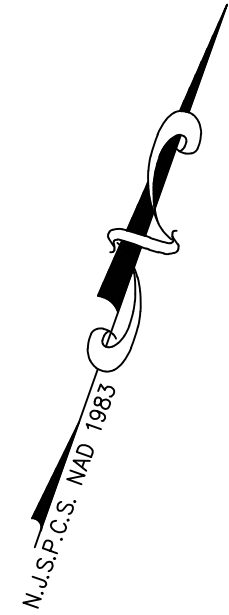
PLANS WHICH DO NOT BEAR THE REMINGTON ENGINEERING EMBOSSED SEAL ARE NOT VALID. NO DOCUMENTS PREPARED BY REMINGTON & VERNICK ENGINEERS AND AFFILIATES ARE INSTRUMENTS OF SERVICE IN RESPECT OF THE PROJECT. THEY ARE NOT INTENDED OR REPRESENTED TO BE SUITABLE FOR REUSE BY THE OWNER OR OTHERS ON EXTENSIONS OF THE PROJECT OR ON ANY OTHER PROJECT. ANY REUSE WITHOUT WRITTEN VERIFICATION OR ADAPTATION BY REMINGTON & VERNICK ENGINEERS AND AFFILIATES FOR THE SPECIFIC PURPOSE INTENDED WILL BE AT OWNERS SOLE RISK AND WITHOUT LIABILITY OR LEGAL EXPOSURE TO REMINGTON & VERNICK ENGINEERS AND AFFILIATES, AND OWNERS AND/OR INDEMNIFY AND HOLD HARMLESS REMINGTON & VERNICK ENGINEERS AND AFFILIATES FROM ALL CLAIMS, DAMAGES, LOSSES AND EXPENSES ARISING OUT OF OR RESULTING THEREFROM.

[illegible]

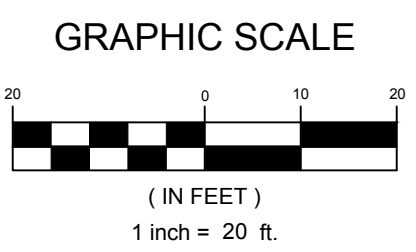
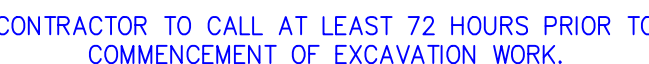
BLOCK 201 - LOT 14
'GINA'S FIELD' SITE IMPROVEMENTS

BOROUGH OF DUMONT
COUNTY OF BERGEN
NEW JERSEY

<u>DRAWN BY:</u> JS	<u>DESIGN BY:</u>	<u>CHECKED BY:</u> CEA	<u>SCALE:</u> NOTED
<u>DATE:</u> 4-30-2019		<u>SHEET No.:</u> 4 of 17	
<u>JOB No.:</u> 0210 T 030			



1. THE HORIZONTAL DATUM IS BASED ON THE NEW JERSEY STATE PLANE COORDINATE SYSTEM (NAD-1983) AND THE VERTICAL DATUM IS BASED ON NAVD-1988. (ADD 1.01 FEET TO THESE ELEVATIONS TO CONVERT TO NGVD-1929 DATUM)
2. PROPERTY AND RIGHT-OF-WAY LINES SHOWN ON THESE PLANS ARE APPROXIMATE LOCATIONS BASED ON THE CURRENT TAX MAPS OF THE BOROUGH OF DUMONT, BERGEN COUNTY, NEW JERSEY. PROPERTY AND RIGHT-OF-WAY LINES ARE SHOWN FOR GRAPHICAL INFORMATION ONLY AND HAVE NOT BEEN FIELD VERIFIED.
3. EXISTING TOPOGRAPHIC CONDITIONS WERE SURVEYED BY REMINGTON & VERNICK ENGINEERS UNDER THE SUPERVISION OF CHARLES E. ADAMSON NJPLS LICENSE NO. 42627. THE SURVEY WORK WAS COMPLETED ON APRIL 23, 2019.



DATE: _____

PAUL D. CRAY

NJ PROFESSIONAL ENGINEER LIC. No. 37458

DATE:

ROBERT J. KLEIN

NJ PROFESSIONAL ENGINEER LIC. No. 42897

PLANS WHICH DO NOT BEAR

ALL DOCUMENTS PREPARED BY REMINGTON & VERNICK ENGINEERS AND AFFILIATES ARE INSTRUMENTS OF SERVICE. ANY REUSE OR REPRODUCTION OF ANY PARTS INTENDED OR REPRESENTED TO BE SUITABLE FOR REUSE BY OWNER OR OTHERS ON EXTENSIONS OF THE PROJECT OR ON ANY OTHER PROJECT, ANY REUSE WITHOUT WRITTEN VERIFICATION OR ADAPTATION BY REMINGTON & VERNICK ENGINEERS AND AFFILIATES FOR THE SPECIFIC PURPOSE INTENDED WILL BE AT OWNERS SOLE RISK AND WITHOUT LIABILITY OR LEGAL EXPOSURE TO REMINGTON & VERNICK ENGINEERS AND AFFILIATES; AND OWNER SHALL INDEMNIFY AND HOLD HARMLESS REMINGTON & VERNICK ENGINEERS AND AFFILIATES FROM AND AGAINST ALL DAMAGES, LOSSES AND EXPENSES ARISING OUT OF OR RESULTING THEREFROM.

DEMOLITION PLAN

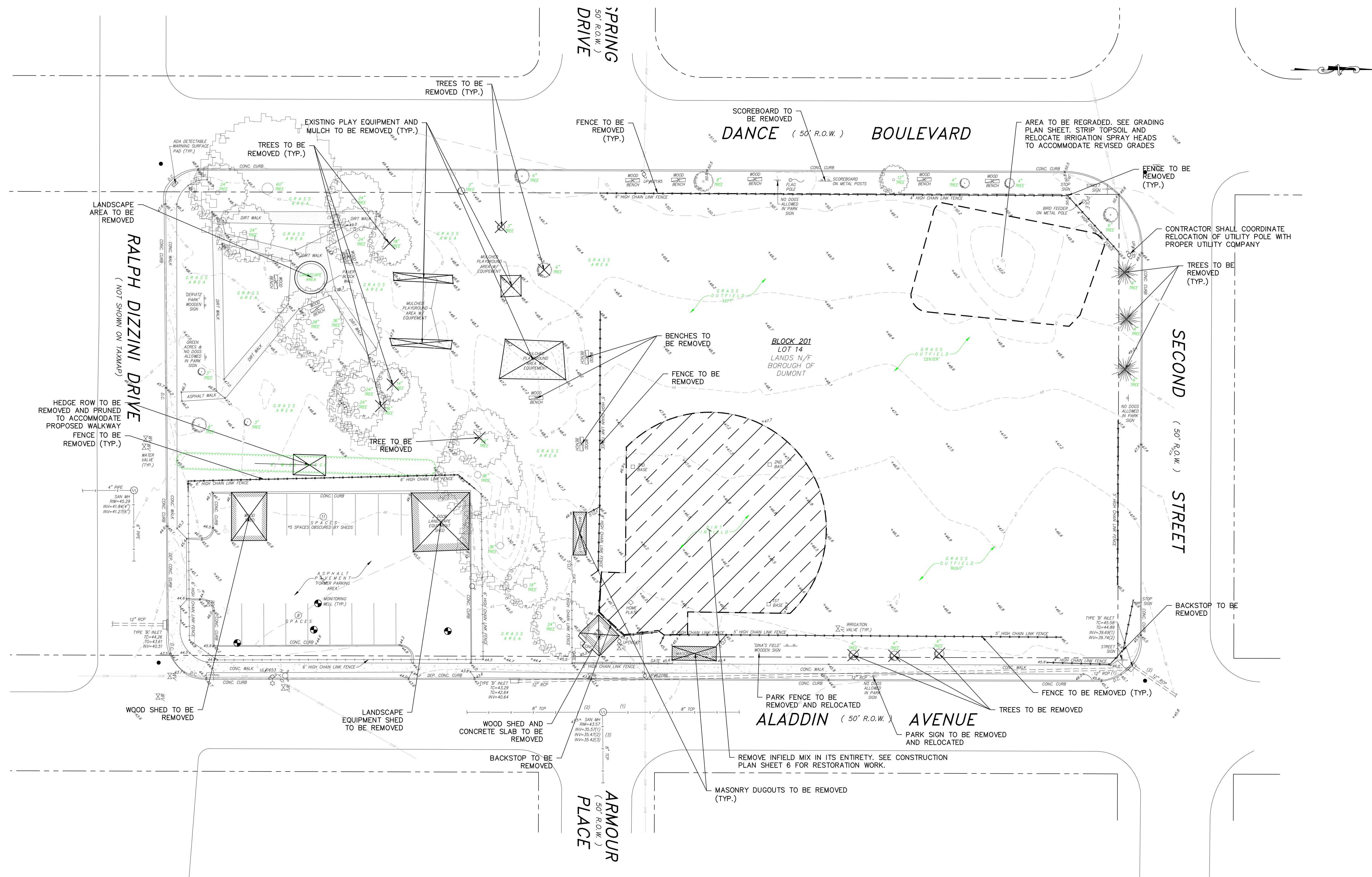
BOROUGH OF DUMONT

GINA'S FIELD PARK IMPROVEMENTS

BOROUGH OF DUMONT
BERGEN COUNTY

NEW JERSEY

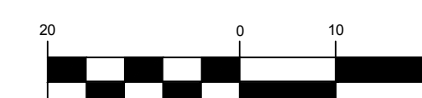
<u>DRAWN BY :</u> A.P.	<u>DESIGN BY :</u> D.J.N.	<u>CHECKED BY :</u> D.J.N.	<u>SCALE :</u> AS NOTED
<u>DATE :</u> 7/9/2021		<u>SHEET No. :</u> 5 of 17	
<u>JOB No. :</u> 0210T035			



DEMOLITION NOTES

1. CONTRACTOR TO REMOVE ALL FENCING AROUND THE SOFTBALL FIELD INCLUDING BACKSTOPS. REMOVE ALL FENCING INCLUDING FOOTINGS. CONTRACTOR TO ASSUME OFFSITE DISPOSAL FOR ALL REMOVED MATERIAL BUT SHALL CHECK WITH DPW PRIOR TO DISPOSAL IN CASE DPW WANTS TO RETAIN ANY MATERIAL.
2. CONTRACTOR TO REMOVE ALL PLUG EQUIPMENT IN ITS ENTIRETY INCLUDING ALL FOOTINGS. ALL MULCH TO BE REMOVED IN ITS ENTIRETY AND DISPOSED OFFSITE. CONTRACTOR TO ASSUME MULCH IS APPROXIMATELY 12" THICK.
3. EXISTING IRRIGATION SYSTEM FOR FIELDS IS TO REMAIN IN PLACE. IRRIGATION HEADS LOCATED WITHIN 10' TO 20' OF FIELD SHALL BE ADJUSTED TO PROPER HEIGHT BASED ON FINAL GRADE.
4. ALL TREES SHOWN TO BE REMOVED SHALL BE REMOVED IN THEIR ENTIRETY INCLUDING STUMP.
5. EXISTING SCOREBOARD TO BE REMOVED AS INDICATED. REMOVE SCOREBOARD AND POSTS. REMOVE ANY WIRES CONNECTED TO THE SCOREBOARD. PLUG ENDS OF ANY CONDUIT IN THE GROUND.

GRAPHIC SCALE



(IN FEET)
1 inch = 20 ft.

RVE

1901

REMINGTON & VERNICK ENGINEERS

ONE HARMON PLAZA, SUITE 210
SECAUCUS, NJ 07094
(201) 624-2137, FAX (201) 624-2136
WEB SITE ADDRESS : WWW.RVE.COM
Certification of Authorization: 24 GA 28003300
~ENGINEERING EXCELLENCE~

DATE:
PAUL D. CRAY
NJ PROFESSIONAL ENGINEER LIC. No. 37458

DATE:
ROBERT J. KLEIN
NJ PROFESSIONAL ENGINEER LIC. No. 42897

PLANS WHICH DO NOT BEAR AN EMBOSSED SEAL ARE NOT VALID.

ALL DOCUMENTS PREPARED BY REMINGTON & VERNICK ENGINEERS AND AFFILIATES ARE INSTRUMENTS OF SERVICE IN RESPECT OF THE PROJECT. THEY ARE NOT INTENDED OR REPRESENTED TO BE SUITABLE FOR REUSE BY OWNER OR OTHERS ON EXTENSIONS OF THE PROJECT OR ON ANY OTHER PROJECT. ANY REUSE WITHOUT WRITTEN VERIFICATION OR ADAPTATION BY REMINGTON & VERNICK ENGINEERS AND AFFILIATES FOR THE SPECIFIC PURPOSE INTENDED WILL BE AT OWNERS SOLE RISK AND WITHOUT LIABILITY OR LEGAL EXPOSURE TO REMINGTON & VERNICK ENGINEERS AND AFFILIATES. AND OWNER SHALL INDEMNIFY AND HOLD HARMLESS REMINGTON & VERNICK ENGINEERS AND AFFILIATES FROM ALL CLAIMS, DAMAGES, LOSSES AND EXPENSES ARISING OUT OF OR RESULTING THEREFROM.

CONSTRUCTION PLAN

BOROUGH OF DUMONT
GINA'S FIELD PARK IMPROVEMENTS
BERGEN COUNTY
NEW JERSEY

DRAWN BY: A.P.
DATE: 7/9/2021
JOB NO.: 02107035

DESIGN BY: D.J.N.
CHECKED BY: D.J.N.
SCALE: AS NOTED
SHEET No.: 6 of 17

CONSTRUCTION NOTES

- SEE PLAY AREA AND SPRAY PARK AREA ON SHEET 9 - EQUIPMENT ENLARGEMENT
- SCOPE OF WORK FOR INFIELD RESTORATION AREA:
a.REMOVE INFIELD MIX IN ITS ENTIRETY. ASSUME 6" THICK. DISPOSE OF MATERIAL OFFSITE.
b.RESTORE AREA AS SHOWN. WITHIN FIELD AREA, FILL VOID WITH BORROW TOPSOIL. INSTALL SOD. OUTSIDE OF FIELD AREA, FILL VOID WITH TOPSOIL AND SEED IN AREAS SHOWN AS GRASS (OUTSIDE PATH AND PARKING LOT AREA)
c.INSTALL IRRIGATION IN INFIELD AREA WITHIN MULTI-USE FIELD. TIE INTO EXISTING IRRIGATION SYSTEM. CONTRACTOR TO PROVIDE LAYOUT AND DESIGN OF EXPANDED SYSTEM PRIOR TO INSTALLATION. FOR THE PURPOSES OF BIDDING, CONTRACTOR TO ASSUME THE FOLLOWING FOR COVERAGE:
i. 30 FOOT SPACING OF IRRIGATION HEADS.
ii.RELOCATE EXISTING IRRIGATION VALVE AS SHOWN

GRAPHIC SCALE

TO BE CONSTRUCTED			
#	DESCRIPTION	UNITS	PLAN QUANTITY
3	CHAIN LINK FENCE, PVC COATED STEEL, 6' HIGH	LF	780
4	CHAIN LINK FENCE GATE, PVC COATED STEEL, 6' HIGH 4' WIDE	UN	2
5	CHAIN LINK FENCE DOUBLE SWING GATE, PVC COATED STEEL, 6' HIGH 10' WIDE	UN	1
6	CONCRETE SIDEWALK, 4" THICK	SY	217
7	CONCRETE SIDEWALK, REINFORCED 6" THICK	SY	82
8	DETECTABLE WARNING SURFACE	SF	8
9	9" X 18" VERTICAL CONCRETE CURB	LF	422
10	8" X 18" CONCRETE CURB SAFETY SURFACE BORDER	LF	326
11	FLAG POLE WITH SOLAR LIGHT	LS	1
13	PARKING LOT STRIPING	LS	1
18	SOD INSTALLATION	SY	1150
22	DECORATIVE ALUMINUM FENCING	LF	229
24	POURED-IN-PLACE PLAYGROUND RUBBER SURFACING WITH UNDERDRAIN SYSTE	UN	469
25	PLAY STRUCTURE (POWERSCAPE) AGES 2-5 YEARS	UN	1
26	PLAY STRUCTURE (POWERSCAPE) AGES 5-12 YEARS	UN	1
27	TOT SWING PLAY STRUCTURE WITH TWO BAYS (POWERSCAPE) AGES 2-5 YEARS	UN	1
28	RESTROOM BUILDING WITH FOUNDATION	LS	1
29	SPRAY PARK COMPLETE	LS	1
30	PARK BENCH	UN	4
31	PICNIC TABLE	UN	2
32	ADA PICNIC TABLE	UN	2
33	NEW ASPHALT WALKWAY	SY	447
34	NEW ASPHALT PARKING AREA	SY	457
35	CONCRETE WHEEL STOPS	UN	14
36	MULTI-USE FIELD STRIPING	LS	1
41	SHADE TREES	UN	7
42	FITNESS STATIONS COMPLETE	UN	4
43	LANDSCAPE AREA	UN	1

RVE

1901

REMINGTON & VERNICK ENGINEERS

ONE HARMON PLAZA, SUITE 210
SECAUCUS, NJ 07094
(201) 624-2137, FAX (201) 624-2136
WEB SITE ADDRESS : WWW.RVE.COM
Certification of Authorization: 24 GA 28003300
—ENGINEERING EXCELLENCE—

DATE: _____
PAUL D. CRAY
NJ PROFESSIONAL ENGINEER LIC. No. 37458

DATE: _____
ROBERT J. KLEIN
NJ PROFESSIONAL ENGINEER LIC. No. 42897

PLANS WHICH DO NOT BEAR AN EMBOSSED SEAL ARE NOT VALID.

ALL DOCUMENTS PREPARED BY REMINGTON & VERNICK ENGINEERS AND AFFILIATES ARE INSTRUMENTS OF SERVICE IN RESPECT OF THE PROJECT. THEY ARE NOT INTENDED OR REPRESENTED TO BE SUITABLE FOR REUSE BY OWNER OR OTHERS ON EXTENSIONS OF THE PROJECT OR ON ANY OTHER PROJECT. ANY REUSE WITHOUT WRITTEN VERIFICATION OR ADAPTATION BY REMINGTON & VERNICK ENGINEERS AND AFFILIATES FOR THE SPECIFIC PURPOSE INTENDED WILL BE AT OWNERS SOLE RISK AND WITHOUT LIABILITY OR LEGAL EXPOSURE TO REMINGTON & VERNICK ENGINEERS AND AFFILIATES. AND OWNER SHALL INDEMNIFY AND HOLD HARMLESS REMINGTON & VERNICK ENGINEERS AND AFFILIATES FROM ALL CLAIMS, DAMAGES, LOSSES AND EXPENSES ARISING OUT OF OR RESULTING THEREFROM.

GRADING PLAN

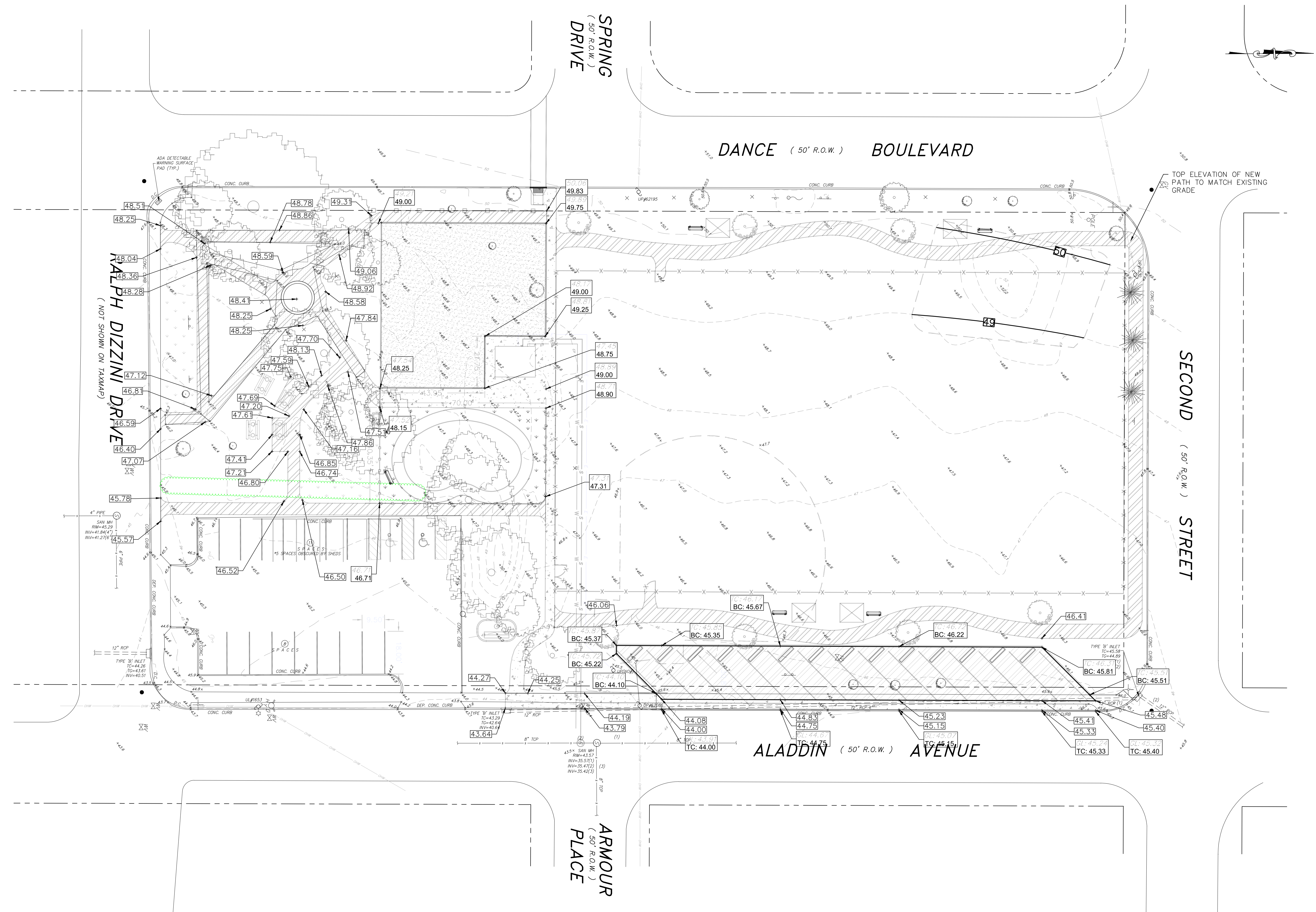
BOROUGH OF DUMONT
GINA'S FIELD PARK IMPROVEMENTS
BERGEN COUNTY
NEW JERSEY

DRAWN BY: A.P.
DATE: 7/9/2021
JOB No.: 0210T035

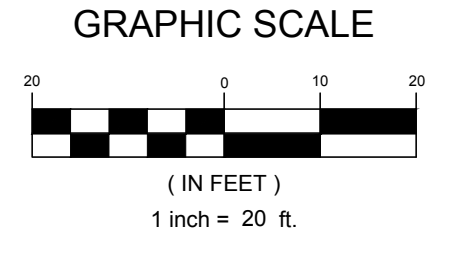
DESIGN BY: D.J.N.

CHECKED BY: D.J.N.

SCALE: AS NOTED
SHEET No.: 7 of 17



LEGEND
EXISTING
PROPOSED



RVE

1901

REMINGTON & VERNICK ENGINEERS

ONE HARMON PLAZA, SUITE 210
SECAUCUS, NJ 07094
(201) 624-2137, FAX (201) 624-2136
WEB SITE ADDRESS : WWW.RVE.COM
Certification of Authorization: 24 GA 28003300
~ENGINEERING EXCELLENCE~

DATE:
PAUL D. CRAY
NJ PROFESSIONAL ENGINEER LIC. No. 37458

DATE:
ROBERT J. KLEIN
NJ PROFESSIONAL ENGINEER LIC. No. 42897

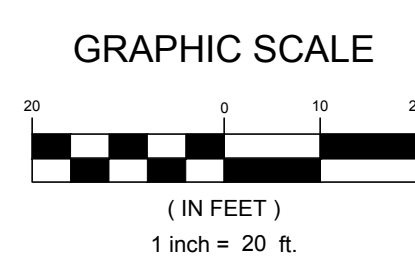
PLANS WHICH DO NOT BEAR AN EMBOSSED SEAL ARE NOT VALID.

ALL DOCUMENTS PREPARED BY REMINGTON & VERNICK ENGINEERS AND AFFILIATES ARE INSTRUMENTS OF SERVICE IN RESPECT OF THE PROJECT. THEY ARE NOT INTENDED OR REPRESENTED TO BE SUITABLE FOR REUSE BY OWNER OR OTHERS ON EXTENSIONS OF THE PROJECT OR ON ANY OTHER PROJECT. ANY REUSE WITHOUT WRITTEN VERIFICATION OR ADAPTATION BY REMINGTON & VERNICK ENGINEERS AND AFFILIATES FOR THE SPECIFIC PURPOSE INTENDED WILL BE AT OWNERS SOLE RISK AND WITHOUT LIABILITY OR LEGAL EXPOSURE TO REMINGTON & VERNICK ENGINEERS AND AFFILIATES. AND OWNER SHALL INDEMNIFY AND HOLD HARMLESS REMINGTON & VERNICK ENGINEERS AND AFFILIATES FROM ALL CLAIMS, DAMAGES, LOSSES AND EXPENSES ARISING OUT OF OR RESULTING THEREFROM.

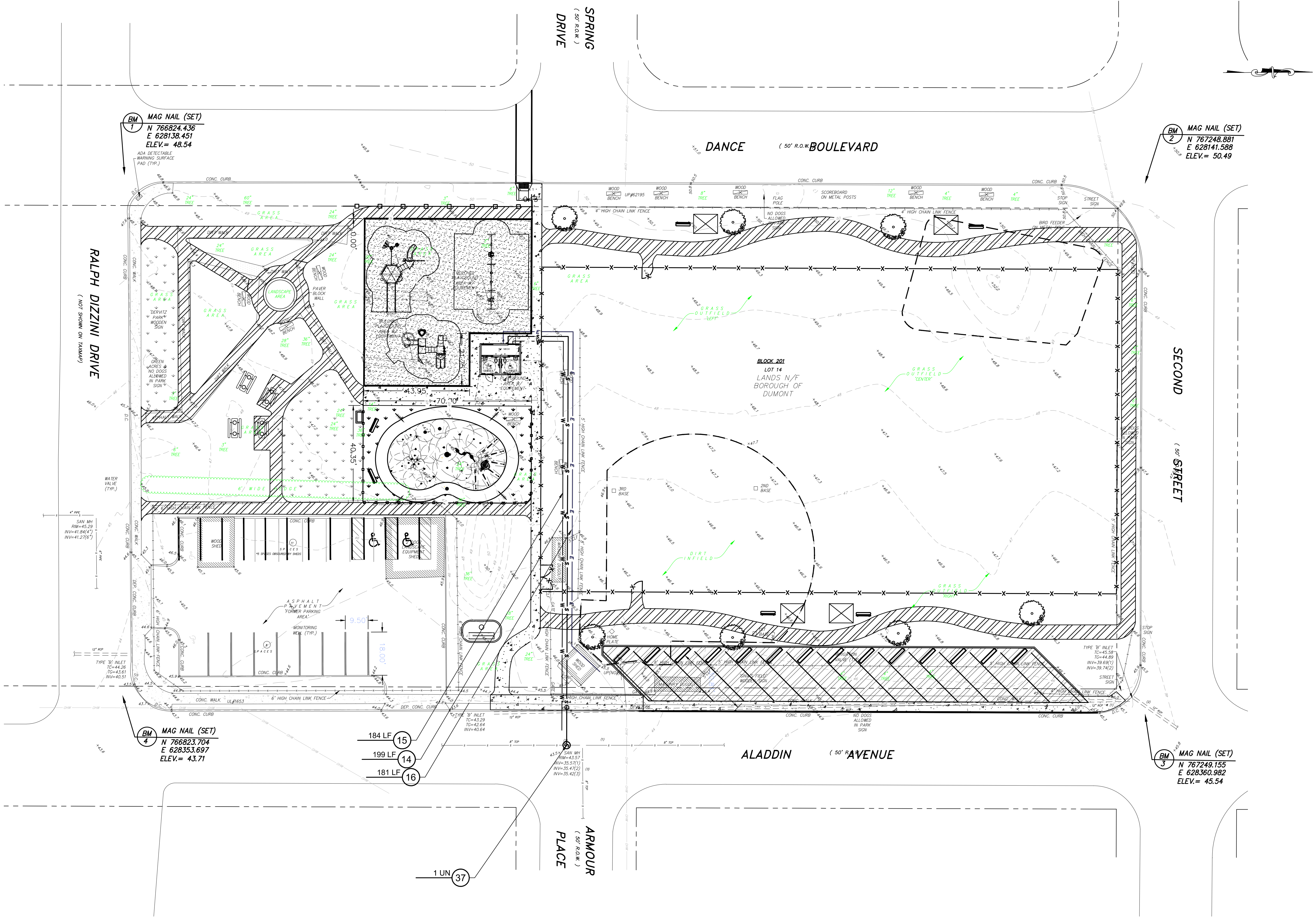
UTILITY PLAN

BOROUGH OF DUMONT
GINA'S FIELD PARK IMPROVEMENTS
BERGEN COUNTY
NEW JERSEY

DRAWN BY: A.P.	DESIGN BY: D.J.N.	CHECKED BY: D.J.N.	SCALE: AS NOTED
DATE: 7/9/2021			SHEET No.: 8 of 17
JOB No.: 0210T035			



TO BE CONSTRUCTED		
#	DESCRIPTION	UNITS PLAN QUANTITY
14	NEW SANITARY SEWER SERVICE LINE	LF 199
15	NEW WATER SERVICE LINE	LF 184
16	NEW ELECTRIC SERVICE	LS 181
37	DOGHOUSE SANITARY MANHOLE	UN 1





TE:
ROBERT J. KLEIN
PROFESSIONAL ENGINEER LIC. No. 4289

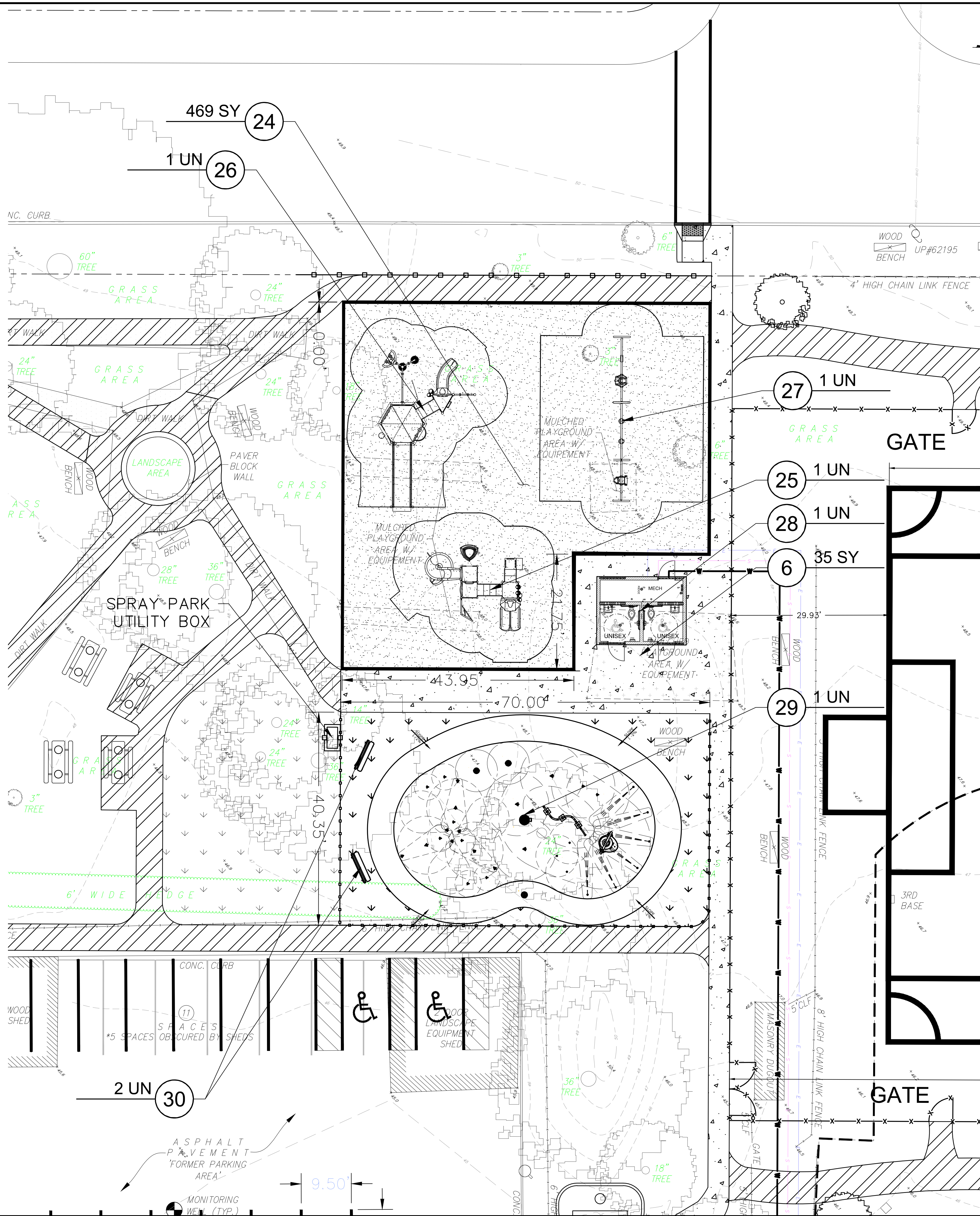
ALL DOCUMENTS PREPARED BY REMINGTON & VERNICK ENGINEERS AND AFFILIATES ARE INSTRUMENTS OF SERVICE IN RESPECT OF THE PROJECT. THEY ARE NOT LOANED OR REPRESENTED TO BE SUITABLE FOR REUSE OR FOR ANY OTHER PROJECT. ANY REUSE WITHOUT THE WRITTEN VERIFICATION OR ADAPTATION BY REMINGTON & VERNICK ENGINEERS AND AFFILIATES FOR THE SPECIFIC PURPOSE INTENDED WILL BE AT OWNERS SOLE RISK AND WITHOUT LIABILITY OR LEGAL EXPOSURE TO REMINGTON & VERNICK ENGINEERS AND AFFILIATES; AND OWNERS SHALL INDEMNIFY AND HOLD HARMLESS REMINGTON & VERNICK ENGINEERS AND AFFILIATES FROM ALL CLAIMS, DAMAGES, LOSSES AND EXPENSES ARISING OUT OF OR RESULTING THEREFROM.

EQUIPMENT ENLARGEMENT

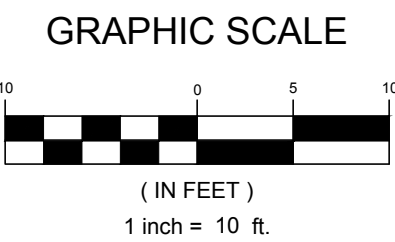
GINA'S FIELD PARK IMPROVEMENTS

BOROUGH OF DUMONT
BERGEN COUNTY
NEW JERSEY

<u>DRAWN BY :</u> A.P.	<u>DESIGN BY :</u> D.J.N.	<u>CHECKED BY :</u> D.J.N.	<u>SCALE :</u> AS NOTED
<u>DATE :</u> 7/9/2021		<u>SHEET No. :</u> 9 of 17	
<u>JOB No. :</u> 0210T035			



TO BE CONSTRUCTED			
#	DESCRIPTION	UNITS	PLAN QUANTITY
6	CONCRETE SIDEWALK, 4" THICK	SY	45
10	8" X 16" CONCRETE CURB SAFETY SURFACE BORDER	LF	326
24	POURED-IN-PLACE PLAYGROUND RUBBER SURFACING WITH UNDERDRAIN SYSTEM	UN	469
25	PLAY STRUCTURE (POWERSCAPE) AGES 2-5 YEARS	UN	1
26	PLAY STRUCTURE (POWERSCAPE) AGES 5-12 YEARS	UN	1
27	TOT SWING PLAY STRUCTURE WITH TWO BAYS (POWERSCAPE) AGES 2-5 YEARS	UN	1
28	RESTROOM BUILDING WITH FOUNDATION	LS	1
29	SPRAY PARK COMPLETE	LS	1
30	PARK BENCH	UN	2



RVE

1901

REMINGTON & VERNICK ENGINEERS

ONE HARMON PLAZA, SUITE 210
SECAUCUS, NJ 07094
(201) 624-2137, FAX (201) 624-2136
WEB SITE ADDRESS : WWW.RVE.COM
Certification of Authorization: 24 GA 28003300
~ENGINEERING EXCELLENCE~

DATE: _____
RICHARD G. ARANGO
NJ PROFESSIONAL ENGINEER LIC. No. 38882

DATE: _____
ROBERT J. KLEIN
NJ PROFESSIONAL ENGINEER LIC. No. 42897

PLANS WHICH DO NOT BEAR AN EMBOSSED SEAL ARE NOT VALID.

ALL DOCUMENTS PREPARED BY REMINGTON & VERNICK ENGINEERS AND AFFILIATES ARE INSTRUMENTS OF SERVICE IN RESPECT OF THE PROJECT. THEY ARE NOT INTENDED OR REPRESENTED TO BE SUITABLE FOR REUSE BY OWNER OR OTHERS ON EXTENSIONS OF THE PROJECT OR ON ANY OTHER PROJECT. ANY REUSE WITHOUT WRITTEN VERIFICATION OR ADAPTATION BY REMINGTON & VERNICK ENGINEERS AND AFFILIATES FOR THE SPECIFIC PURPOSE INTENDED WILL BE AT OWNERS SOLE RISK AND WITHOUT LIABILITY OR LEGAL EXPOSURE TO REMINGTON & VERNICK ENGINEERS AND AFFILIATES. AND OWNER SHALL INDEMNIFY AND HOLD HARMLESS REMINGTON & VERNICK ENGINEERS AND AFFILIATES FROM ALL CLAIMS, DAMAGES, LOSSES AND EXPENSES ARISING OUT OF OR RESULTING THEREFROM.

DETAIL SHEET #1

BOROUGH OF DUMONT
GINA'S FIELD PARK IMPROVEMENTS
BERGEN COUNTY
NEW JERSEY

DRAWN BY: M.D.J./M.K.
DATE: 7/9/2021
JOB No.: 0210T035

DESIGN BY: B.S.N.
CHECKED BY: B.S.N.
SCALE: AS NOTED

SHEET No.: 11 of 17

S:\Dumont\Borough\0210T035 - Gina's Field Park Design\CA&S DRAWINGS\DETAILS - 0210T035.dwg 11/25/2021 12:13:28 PM

NOTES:

1. EXPANSION JOINTS 1/2" WIDE SHALL BE INSTALLED IN THE CURB 10' APART AND FILLED WITH CELLULAR COMPRESSION MATERIAL AS SPECIFIED, AND RECESSED 1/4" FROM FACE AND TOP OF CURB. EXPANSION JOINTS TO BE INCLUDED IN PRICE BID FOR CURB.
2. FOR CONTINUOUS POURED CAST-IN-PLACE CURSING, EXPANSION JOINTS EVERY 50' AND CONTRACTION JOINTS MUST BE MACHINE CUT 2" DEEP ON FRONT, TOP AND REAR OF CURB WITHIN 18 HOURS OF INITIAL CURB POUR @ 10' SPACING.
3. PAVEMENT RESTORATION ADJACENT TO CURB SHALL BE INCLUDED IN THE UNIT PRICE BID FOR HOT MIX ASPHALT PAVEMENT REPAIR. MAXIMUM WIDTH FOR PAYMENT PURPOSES SHALL BE TWO FEET.

9"x18" CONCRETE VERTICAL CURB DETAIL

ELEVATION SECTION "A-A"

DEPRESSED CURB AT DRIVEWAY

CONCRETE SIDEWALK, 4" THICK

ASPHALT CRACK SEALING DETAIL

CONCRETE SIDEWALK, REINFORCED, 6" THICK

HOT MIX ASPHALT BASE REPAIR DETAIL

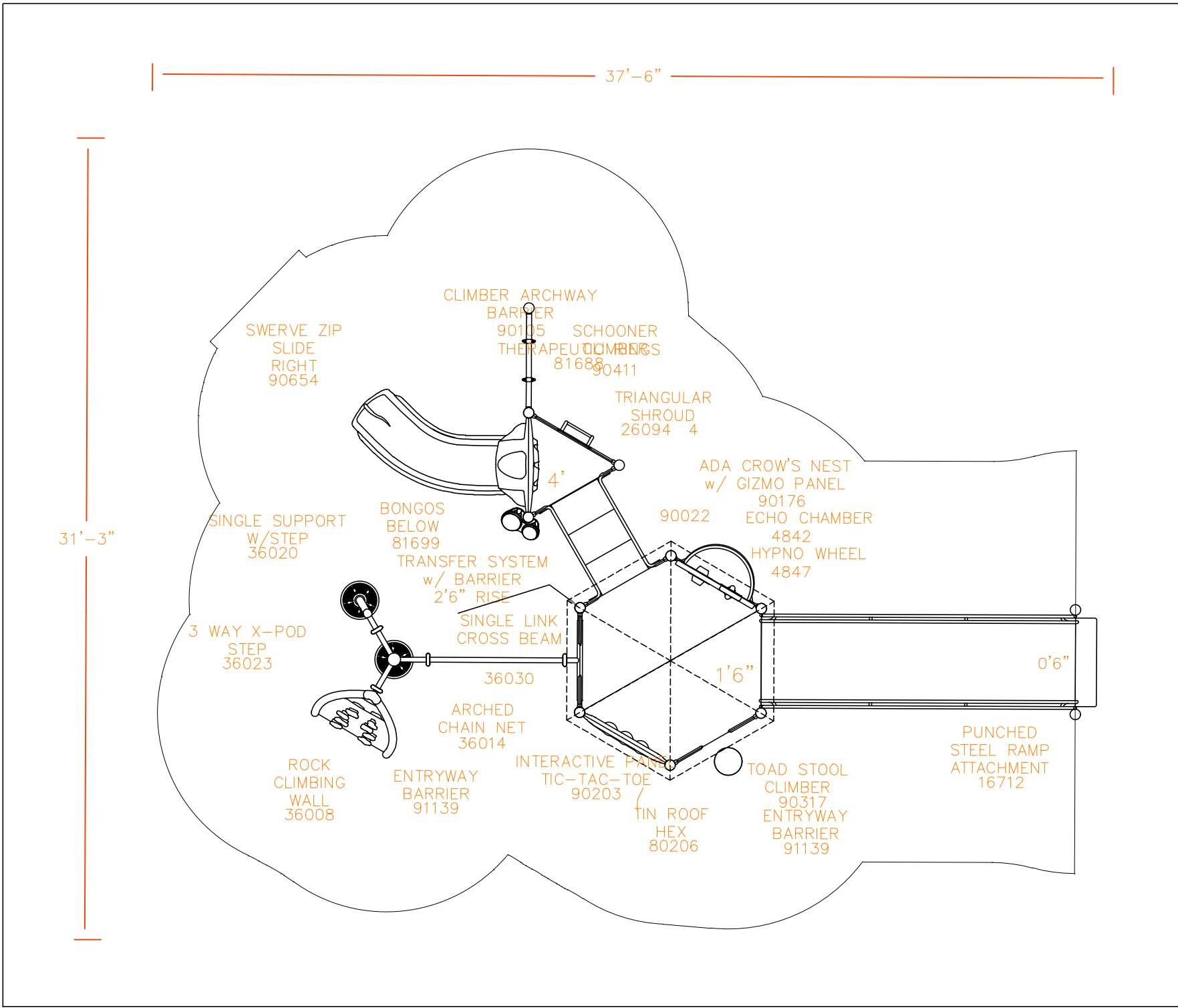
SECTION A-A

CONCRETE DRIVEWAY, REINFORCED, 6" THICK DETAILS

NOTES:

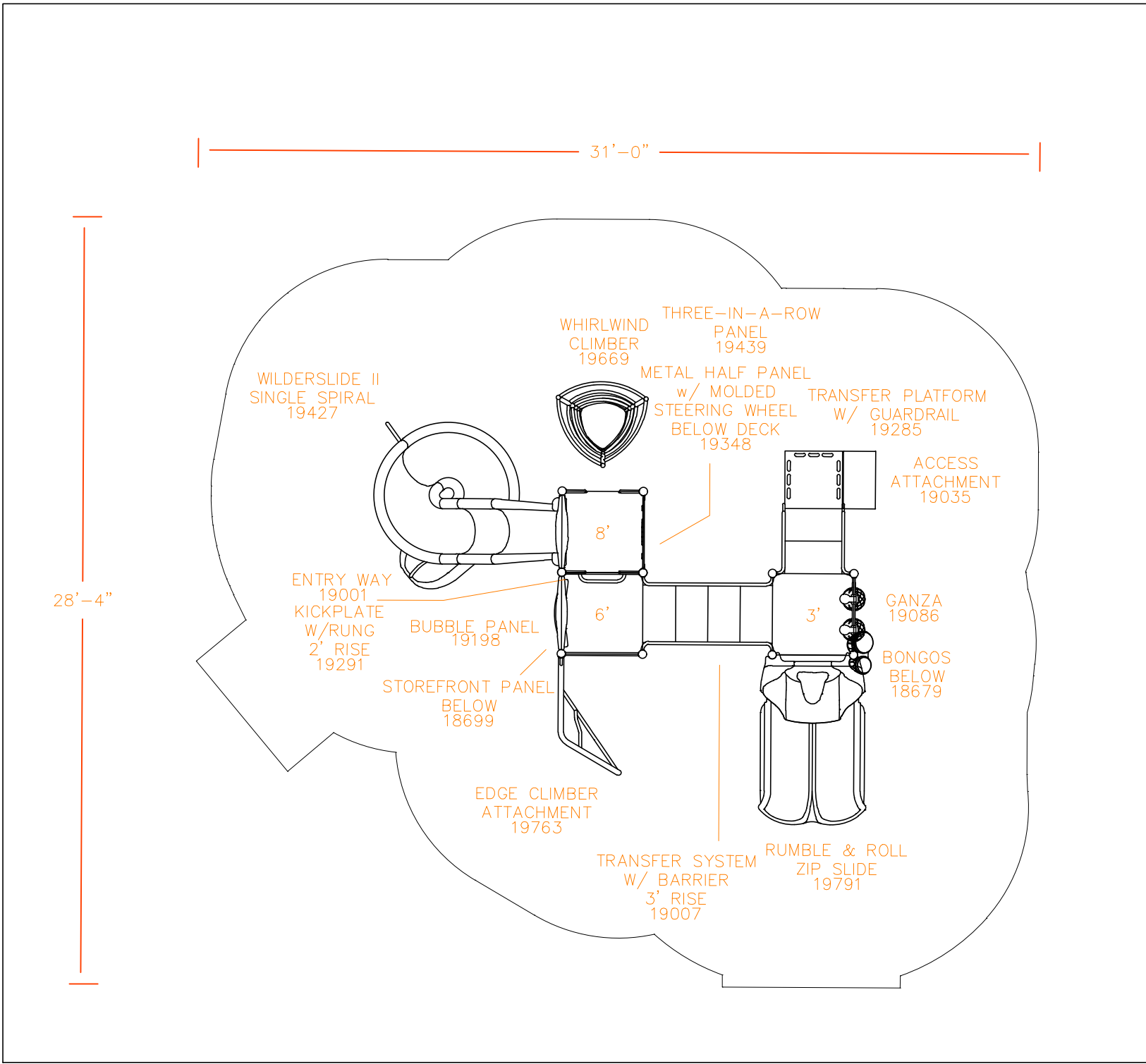
TRANSVERSE EXPANSION JOINTS, 1/2" WIDE SHALL BE PROVIDED AT INTERVALS OF NOT MORE THAN 10' AND FILLED WITH PREFORMED BITUMINOUS CELLULAR TYPE JOINT FILLER. LONGITUDINAL JOINTS, 1/2" WIDE, SHALL BE FILLED WITH PREFORMED BITUMINOUS TYPE JOINT FILLER. THE TOP OF ALL JOINT FILLER SHALL BE 1/2" BELOW THE TOP OF THE CONCRETE AND FILLED WITH JOINT SEALER (SIKAFLEXIA, OR AN APPROVED EQUAL). NO SEPARATE PAYMENT WILL BE MADE FOR DENSE-GRADED AGGREGATE BASE COURSE OR WELDED WIRE FABRIC

PARKING LOT PROFILE



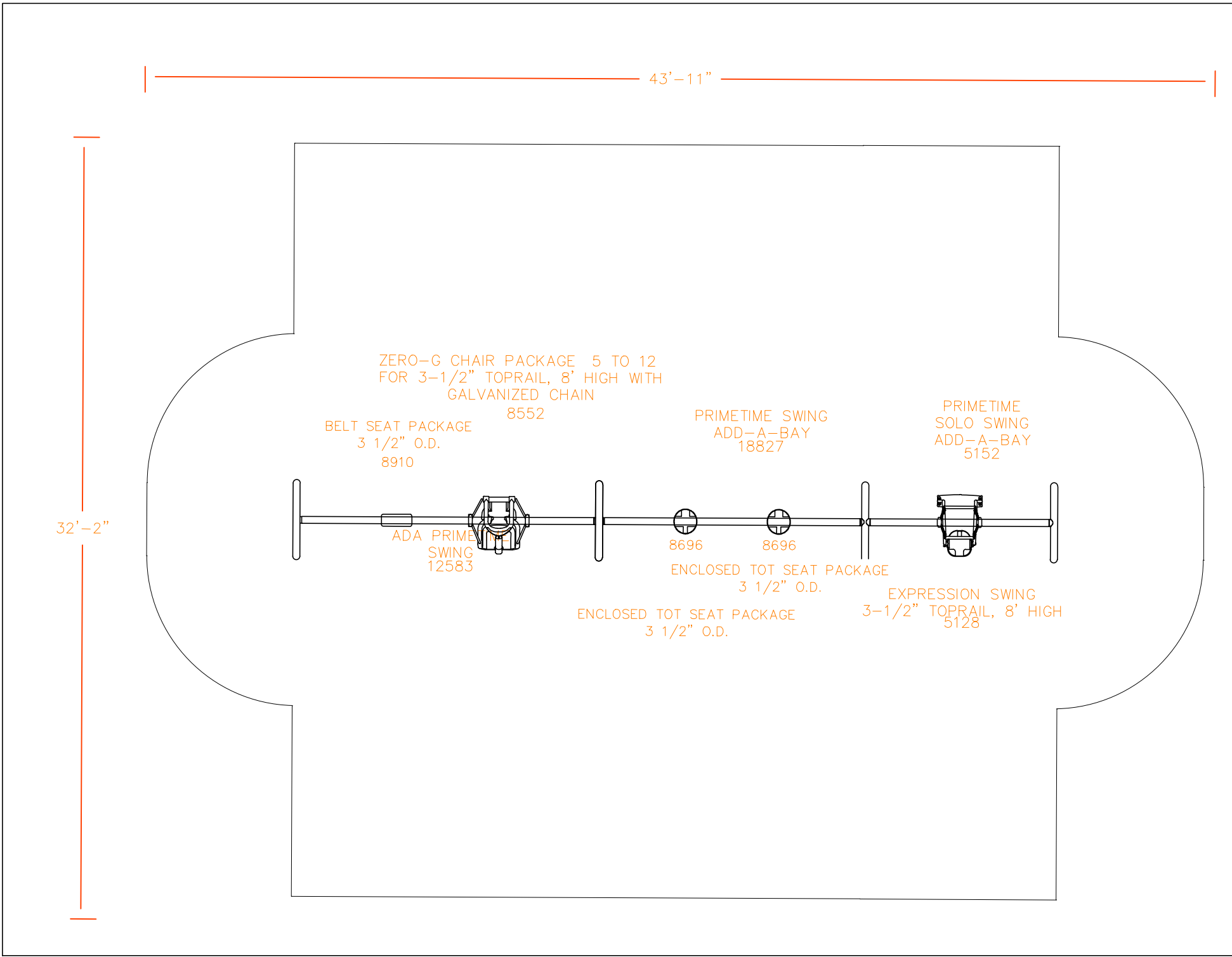
5 - 12 PLAY EQUIPMENT LAYOUT

SCALE: 1"=5'



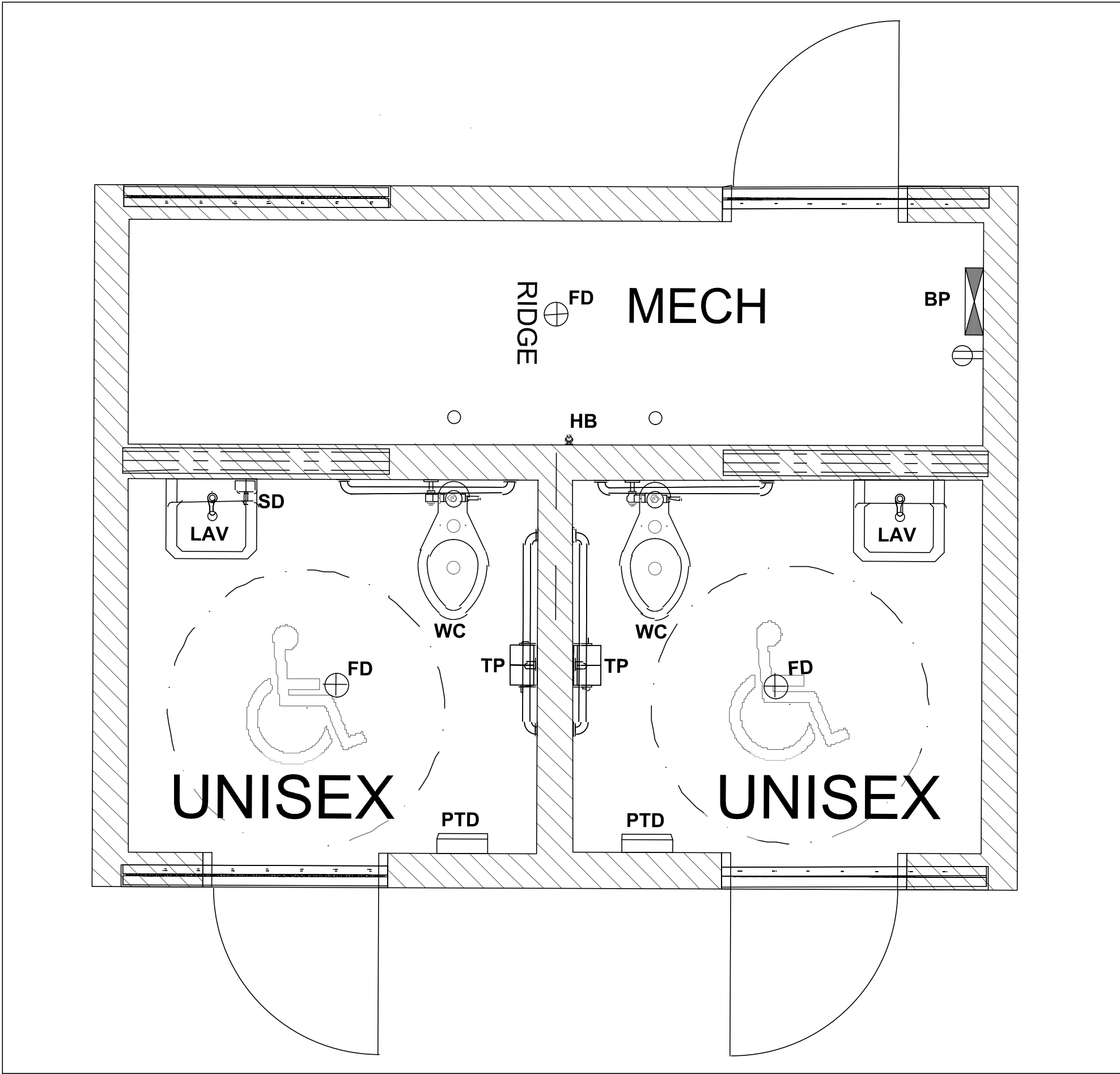
2 - 5 PLAY EQUIPMENT LAYOUT

SCALE: 1"=5'



SWING EQUIPMENT SET LAYOUT

SCALE: 1"=5'



PRE-FABRICATED RESTROOM DETAIL

SCALE: 1"=2'

RVE

1901

REMINGTON & VERNICK ENGINEERS

ONE HARMON PLAZA, SUITE 210
SECAUCUS, NJ 07094
(201) 624-2137, FAX (201) 624-2136
WEB SITE ADDRESS : WWW.RVE.COM
Certification of Authorization: 24 GA 28003300
~ENGINEERING EXCELLENCE~

DATE: _____

RICHARD G. ARANGO

NJ PROFESSIONAL ENGINEER LIC. No. 38682

DATE: _____

ROBERT J. KLEIN

NJ PROFESSIONAL ENGINEER LIC. No. 42897

PLANS WHICH DO NOT BEAR AN EMBOSSED SEAL ARE NOT VALID.

ALL DOCUMENTS PREPARED BY REMINGTON & VERNICK ENGINEERS AND AFFILIATES ARE INSTRUMENTS OF SERVICE IN RESPECT OF THE PROJECT. THEY ARE NOT INTENDED OR REPRESENTED TO BE SUITABLE FOR REUSE BY OWNER OR OTHERS ON EXTENSIONS OF THE PROJECT OR ON ANY OTHER PROJECT. ANY REUSE WITHOUT WRITTEN VERIFICATION OR ADAPTATION BY REMINGTON & VERNICK ENGINEERS AND AFFILIATES FOR THE SPECIFIC PURPOSE INTENDED WILL BE AT OWNERS SOLE RISK AND WITHOUT LIABILITY OR LEGAL EXPOSURE TO REMINGTON & VERNICK ENGINEERS AND AFFILIATES. AND OWNER SHALL INDEMNIFY AND HOLD HARMLESS REMINGTON & VERNICK ENGINEERS AND AFFILIATES FROM ALL CLAIMS, DAMAGES, LOSSES AND EXPENSES ARISING OUT OF OR RESULTING THEREFROM.

DETAIL SHEET #3

BOROUGH OF DUMONT

GINA'S FIELD PARK IMPROVEMENTS

BOROUGH OF DUMONT

BERGEN COUNTY

NEW JERSEY

DRAWN BY: MAP	DESIGN BY: M.D.J.N.K.	CHECKED BY: B.J.N.	SCALE: AS NOTED
DATE: 7/9/2021	SHEET No.: 13 of 17		
JOB No.: 02107035			

S:\Dumont\Borough\021035 - Gina's Field Park Design\CAD & DRAWINGS\DETAILS - 02107035.dwg 7/13/2021 12:11:18 PM